



2023 Review of UK Parliament Constituencies

Initial Proposals

Boundary Commission for Scotland
Thistle House
91 Haymarket Terrace
Edinburgh EH12 5HD

Website: www.bcomm-scotland.independent.gov.uk
Email: bcs@scottishboundaries.gov.uk
Tel: 0131 244 2001
Twitter: @BCommScot

Consultation
Site: www.bcs2023review.com

Introduction

1. We are the Boundary Commission for Scotland, an independent, non-political body whose statutory purpose is to make recommendations for UK Parliament constituencies in Scotland. Our current membership is:

Chair (ex-officio):	Speaker of the House of Commons
Deputy Chair:	The Honourable Lord Matthews
Commissioners:	Professor Ailsa Henderson and Dr Susan Walker
Assessors:	Mr Dominic Cuthbert, Ordnance Survey and Mr Paul Lowe, Registrar General, National Records of Scotland
Secretary to the Commission:	Ms Isabel Drummond-Murray
2. We are tasked by the Parliamentary Constituencies Act 1986 (as amended) to undertake a review of UK Parliament constituencies in Scotland, and we must submit to the Speaker a report containing our recommendations before 1 July 2023.
3. The 2023 Review is being conducted simultaneously and independently by the four UK Parliamentary Boundary Commissions. It will result in a UK Parliament elected from 650 constituencies.
4. Legislation determines how many constituencies should be allocated to each country. Scotland has been allocated 57 constituencies for the 2023 Review, two fewer than at present. England has been allocated 543 (+10), Northern Ireland 18 (no change) and Wales 32 (-8).
5. There are separate Parliamentary Boundary Commissions for England, Northern Ireland and Wales.
6. This booklet contains our Initial Proposals for these constituencies and information on how to participate in our public consultation from 14 October 2021 to 8 December 2021.
7. For the 2023 Review:
 - The legislation defines two constituencies in Scotland: Na h-Eileanan an Iar constituency and Orkney and Shetland constituency;
 - The electorate of every other constituency in Scotland must be between 69,724 and 77,062 electors, i.e. within 5% of the UK-wide electoral quota of 73,393, unless its area exceeds 12,000 square kilometres;
 - No constituency may exceed 13,000 square kilometres.
8. We commenced the current review in January 2021. We are now consulting the public on our Initial Proposals. Details of how to participate in the consultation are given below. These public consultations will inform any Revised Proposals in 2022. We expect to make our final recommendations for constituencies in 2023.
9. For each constituency, we must recommend a name and its designation as a burgh constituency or a county constituency.
10. Our review does not affect Scottish Parliament boundaries, council area or ward boundaries or any services within them.

11. For further information on the policies and procedures we have adopted to underpin this review and the legal requirements for constituency design, please refer to our Policies and Procedures booklet, which is available on our website www.bcomm-scotland.independent.gov.uk.

Our Initial Proposals

12. We have developed our Initial Proposals using electorate data from 2 March 2020, published by National Records of Scotland. The number of electors registered in each council electoral ward on that date can be found on our website www.bcomm-scotland.independent.gov.uk.
13. 18 existing constituencies are within the electorate quota for the 2023 Review. Our proposals retain nine of these constituencies unchanged: Ayr, Carrick and Cumnock; Central Ayrshire; East Renfrewshire; Edinburgh South West; Kilmarnock and Loudoun; Midlothian; North Ayrshire and Arran; Stirling; West Aberdeenshire and Kincardine. A further two constituencies are preserved in legislation: Na h-Eileanan an Iar; and Orkney and Shetland. The remaining nine are not retained as a result of knock on consequences of neighbouring or nearby constituencies.
14. Maps of each constituency can be found in Appendix A.

Public consultation on our Initial Proposals

15. The public consultation on our Initial Proposals runs from 14 October 2021 until 8 December 2021.
16. You can tell us what you think of our proposals by leaving a comment on our consultation site: www.bcs2023review.com. You can view the boundaries of our Initial Proposals and search constituencies by postcode or council area. You can compare our Initial Proposals with the existing constituency boundaries, as well as other boundaries. Maps of each constituency and further information will also be available to download.
17. We welcome all comments on our proposals, whether in support or not, to help inform our deliberations. Maintaining public confidence in the review process is a key part of our responsibilities. We place great importance on representations made to us during the consultation stages of a review.
18. Where comments contain suggestions for improvements to our proposals it would be helpful if they were accompanied by an alternative proposal that takes account of statutory requirements and considers the consequences for the wider area. We also welcome suggestions of alternative names for constituencies. All comments will be evaluated by the quality of argument and the evidence provided. We are unable to accept comments via social media.
19. Comments can be made in the following ways:

Consultation site: www.bcs2023review.com
in writing to: Boundary Commission for Scotland, Thistle House, 91
Haymarket Terrace, Edinburgh EH12 5HD
by email to: comments@scottishboundaries.gov.uk

20. During the consultation period we display our proposals at Display Points. There is at least one Display Point in each proposed constituency. A full list of Display Points is available on our website www.bcomm-scotland.independent.gov.uk.

Further Stages

21. In early 2022 we will hold a secondary six-week consultation period. At the start of this consultation period we will publish all the comments received on our Initial Proposals. You will be able to view the submitted comments on our consultation website and submit comments on them. We will also hold between 2 and 5 Public Hearings.
22. After the secondary consultation period, we will consider all the evidence we have received. If we decide to alter our Initial Proposals, we will publish the resulting Revised Proposals for a 4 week public consultation period later in 2022.
23. After the consultation period on our Revised Proposals, we will develop our Final Recommendations which we will submit in our report to the Speaker by 1 July 2023.

Proposed constituencies

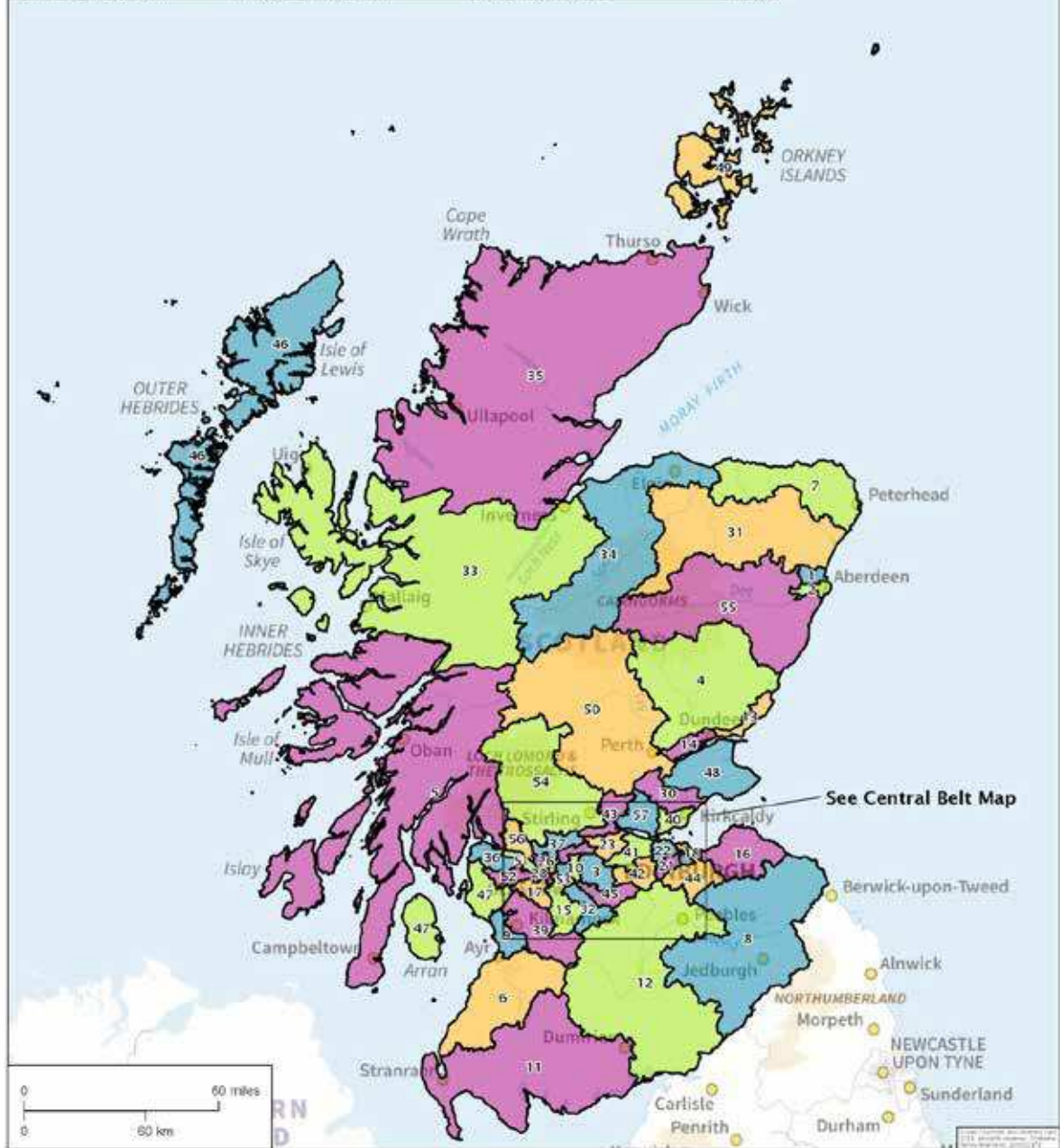
	Constituency Name	Electorate	Area (sq. km)	Designation
1	Aberdeen North	76,895	104	Burgh
2	Aberdeen South	76,560	102	Burgh
3	Airdrie and Shotts	72,775	239	County
4	Angus and Strathmore	74,051	2891	County
5	Argyll	71,442	9294	County
6	Ayr, Carrick and Cumnock	72,057	1636	County
7	Banff and Buchan	72,837	1451	County
8	Berwickshire, Roxburgh and Selkirk	73,779	3764	County
9	Central Ayrshire	69,779	237	County
10	Coatbridge and Bellshill	72,332	69	Burgh
11	Dumfries and Galloway	74,916	3844	County
12	Dumfriesshire, Clydesdale and Tweeddale	73,593	4809	County
13	Dundee East and Arbroath	75,706	184	County
14	Dundee West and Gowrie	76,771	181	County
15	East Kilbride and Strathaven	75,161	305	County
16	East Lothian Coast	73,939	693	County
17	East Renfrewshire	72,959	174	County
18	Edinburgh East	73,187	32	Burgh
19	Edinburgh North and Leith	76,543	20	Burgh
20	Edinburgh South	70,893	31	Burgh
21	Edinburgh South West	73,315	90	Burgh
22	Edinburgh West	76,903	108	Burgh
23	Forth Valley South	76,431	182	County
24	Glasgow Central	72,600	26	Burgh
25	Glasgow East	72,384	42	Burgh
26	Glasgow North	73,316	28	Burgh
27	Glasgow South	70,191	27	Burgh
28	Glasgow South West	71,584	29	Burgh
29	Glasgow West	71,493	19	Burgh
30	Glenrothes and Loch Leven	74,155	368	County
31	Gordon and Moray South	73,121	3151	County
32	Hamilton and Clyde Valley	74,577	258	County
33	Highland Central	75,651	8717	County
34	Highland East and Elgin	72,038	3570	County
35	Highland North	76,654	12781	County
36	Inverclyde and Bridge of Weir	70,476	218	County
37	Kelvin North	70,773	202	County
38	Kelvin South	74,905	94	Burgh
39	Kilmarnock and Loudoun	74,801	702	County
40	Kirkcaldy and Cowdenbeath	74,637	154	County
41	Linlithgow and Bathgate	73,710	233	County
42	Livingston	73,394	232	County
43	Mid Forth Valley	74,126	263	County
44	Midlothian	71,210	355	County
45	Motherwell and Clydesdale North	70,138	214	County
46	<i>Na h-Eileanan an Iar</i>	<i>21,177</i>	<i>3267</i>	<i>County</i>

Boundary Commission for Scotland
2023 Review of UK Parliament Constituencies - Initial Proposals

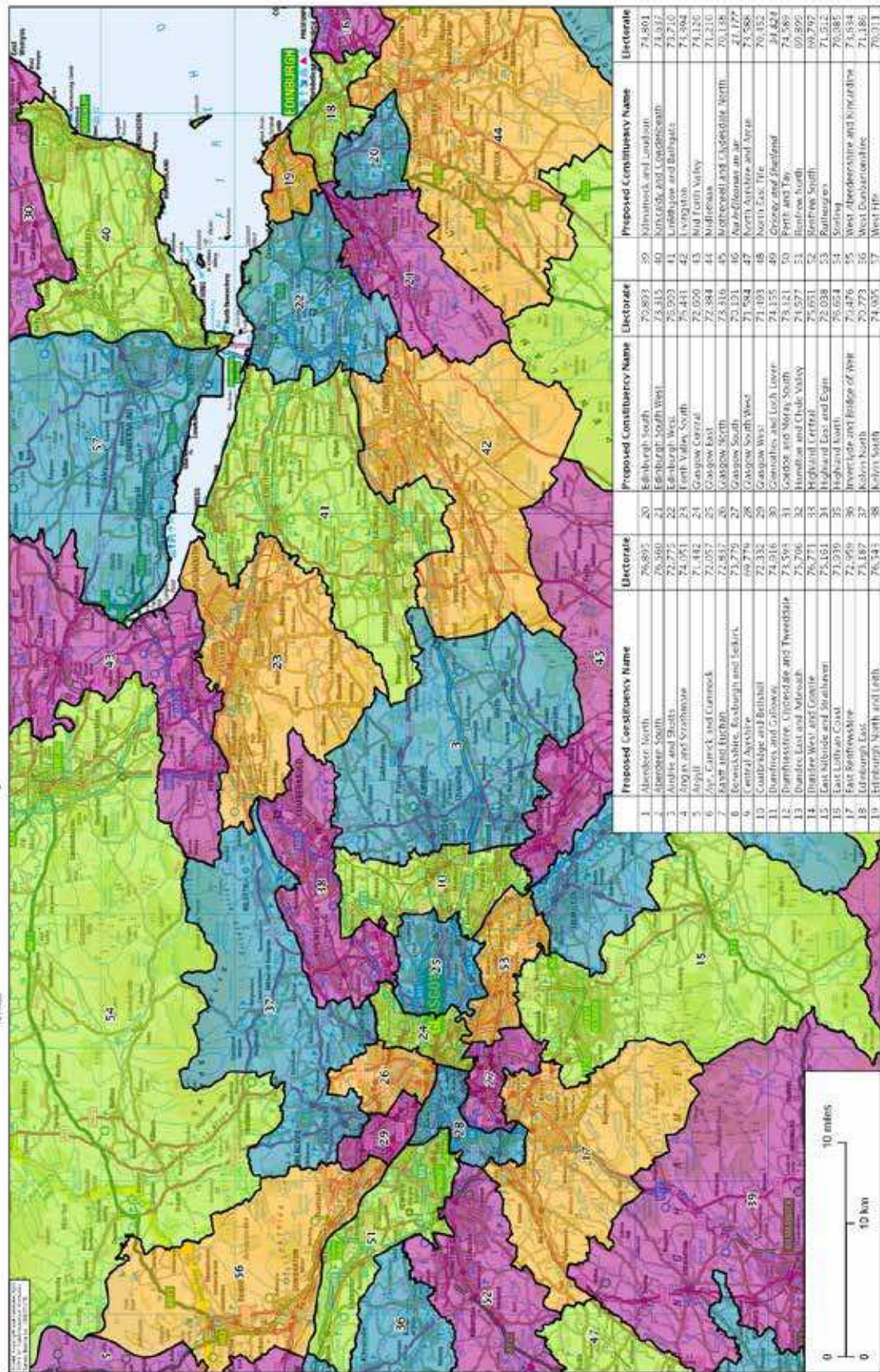
47	North Ayrshire and Arran	73,588	834	County
48	North East Fife	70,452	824	County
49	<i>Orkney and Shetland</i>	<i>34,824</i>	<i>2744</i>	<i>County</i>
50	Perth and Tay	74,589	4156	County
51	Renfrew North	69,899	79	Burgh
52	Renfrew South	69,797	150	County
53	Rutherglen	71,612	41	Burgh
54	Stirling	70,085	2255	County
55	West Aberdeenshire and Kincardine	73,634	3272	County
56	West Dunbartonshire	71,186	184	County
57	West Fife	70,011	299	County

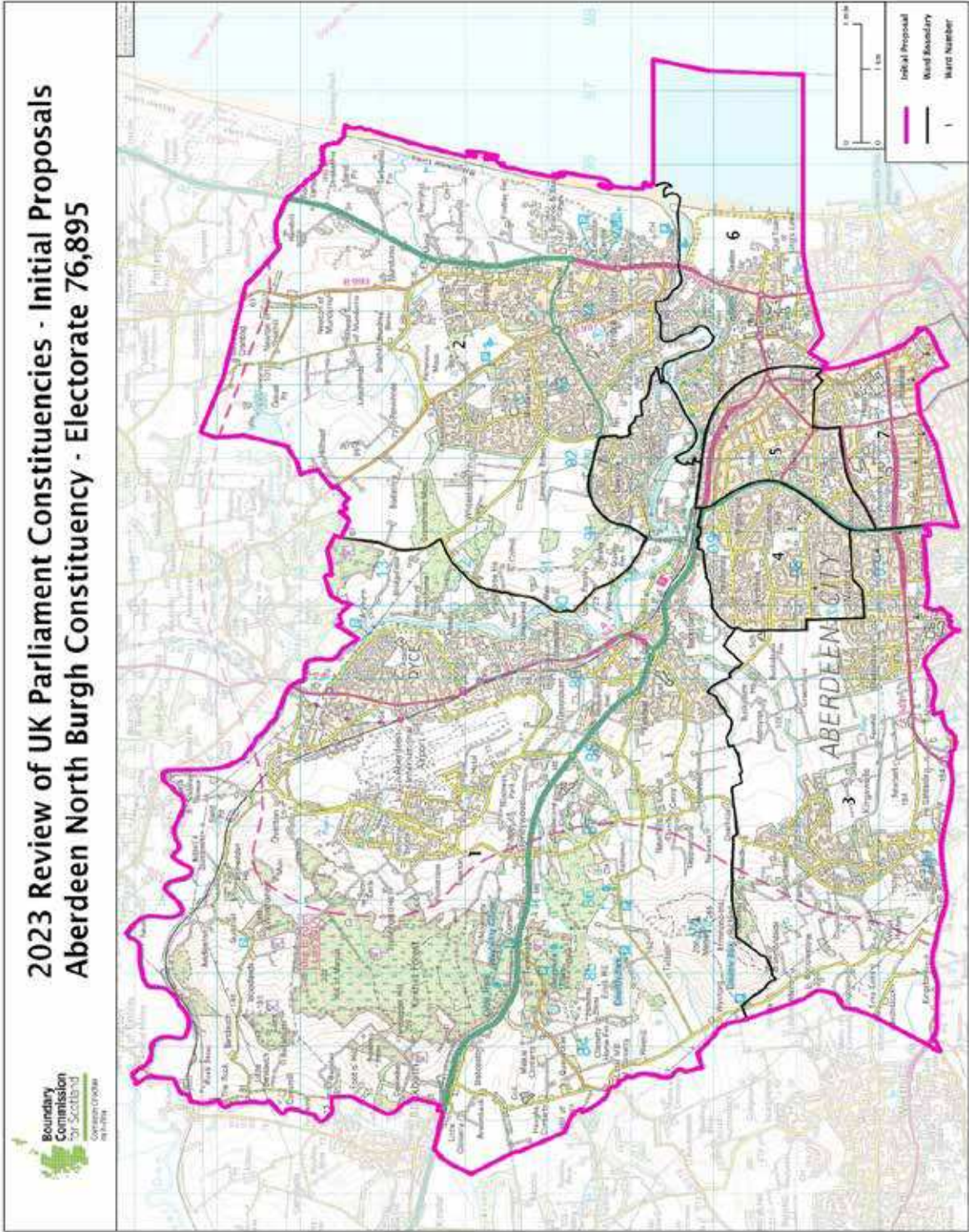
Public Consultation 2023 Review of UK Parliament Constituencies Initial Proposals

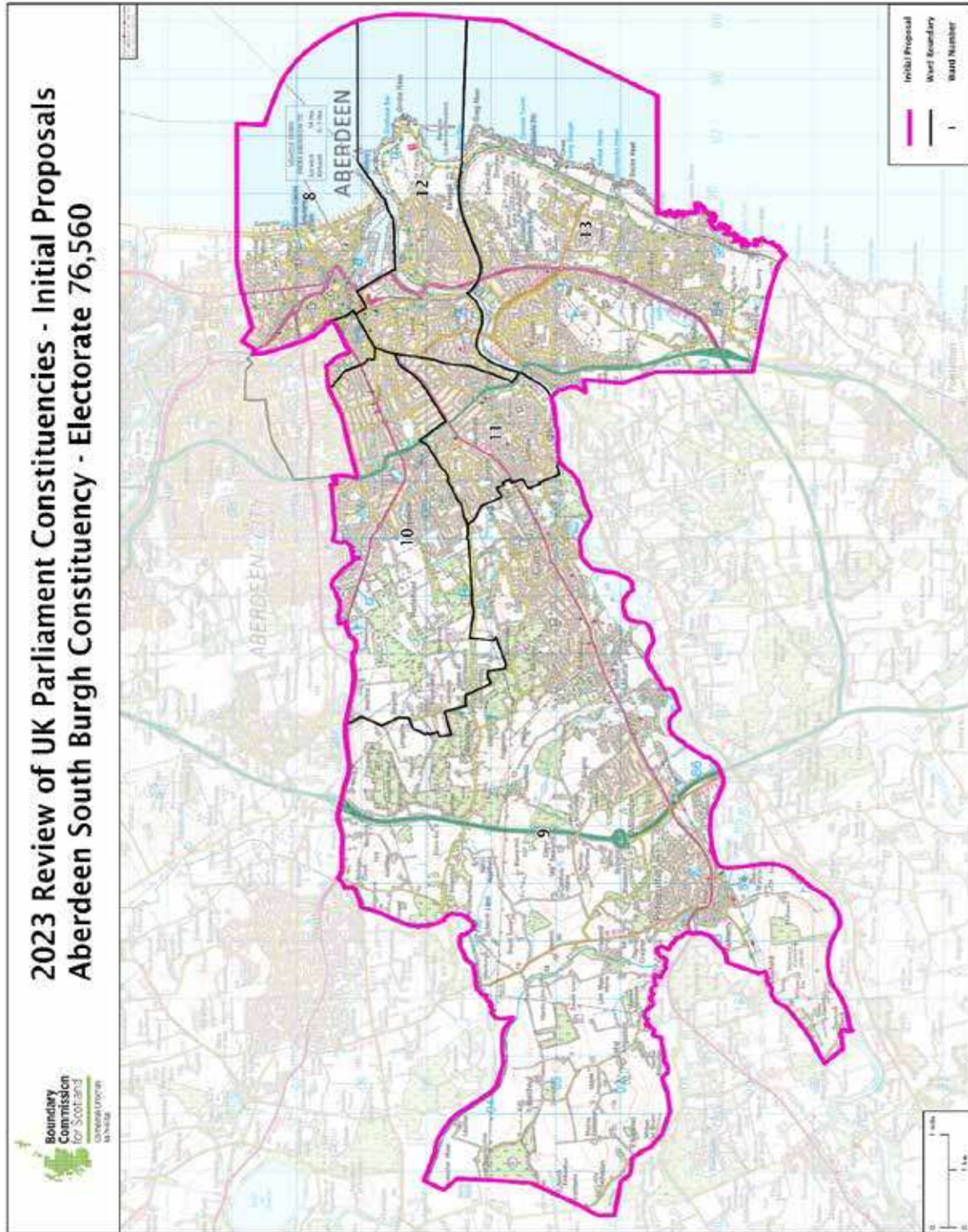
Proposed Constituency Name	Electorate	Proposed Constituency Name	Electorate	Proposed Constituency Name	Electorate
1 Aberdeen North	76,895	20 Edinburgh South	72,893	39 Limerick and Louth	74,801
2 Aberdeen South	76,565	21 Edinburgh South West	73,115	40 East Ayr and Cumnock	74,487
3 Argyll and Bute	72,175	22 Edinburgh West	75,363	41 Leith and Broughton	72,710
4 Argyll and Shetland	74,051	23 East Ayr South	75,413	42 Livingston	72,104
5 Argyll	73,442	24 Glasgow Central	72,860	43 Mid Lothian	74,126
6 Ayr, Carrick and Cumnock	74,057	25 Glasgow East	72,884	44 Motherwell	74,410
7 Barr and Bute	72,817	26 Glasgow North	73,115	45 Motherwell and Cumbernauld North	70,115
8 Berwickshire, Roxburgh and Selkirk	72,779	27 Glasgow South	75,161	46 North Glasgow East	71,172
9 Central Ayrshire	88,779	28 Glasgow South West	71,564	47 North Ayrshire and Arran	71,580
10 Coatbridge and Bellshill	72,332	29 Glasgow West	74,493	48 North East Fife	70,052
11 Dumfries and Galloway	74,919	30 Glenrothes and Lothian	74,155	49 Orkney and Shetland	118,214
12 Dumfriesshire, Clydesdale and Tweeddale	71,501	31 Dundee and Moray South	73,112	50 Perth and Tay	74,589
13 Dundee East and Arbroath	75,206	32 Hamilton and Clyde Valley	74,577	51 Renfrew North	85,699
14 Dundee West and Perth	76,271	33 Highland Central	75,351	52 Renfrew South	85,197
15 East Ayrshire and South Ayr	75,360	34 Highland East and Sgair	72,016	53 Renfrew East	71,612
16 East Lothian Coast	71,839	35 Highland North	79,054	54 Stirling	70,005
17 East Renfrewshire	72,059	36 Inverclyde and Bridge of Weir	70,476	55 West Aberdeenshire and Kincardine	71,634
18 Edinburgh East	71,387	37 Inverclyde	70,273	56 West Dunbartonshire	73,189
19 Edinburgh North and Leith	76,543	38 Inverclyde South	74,365	57 West Fife	70,011

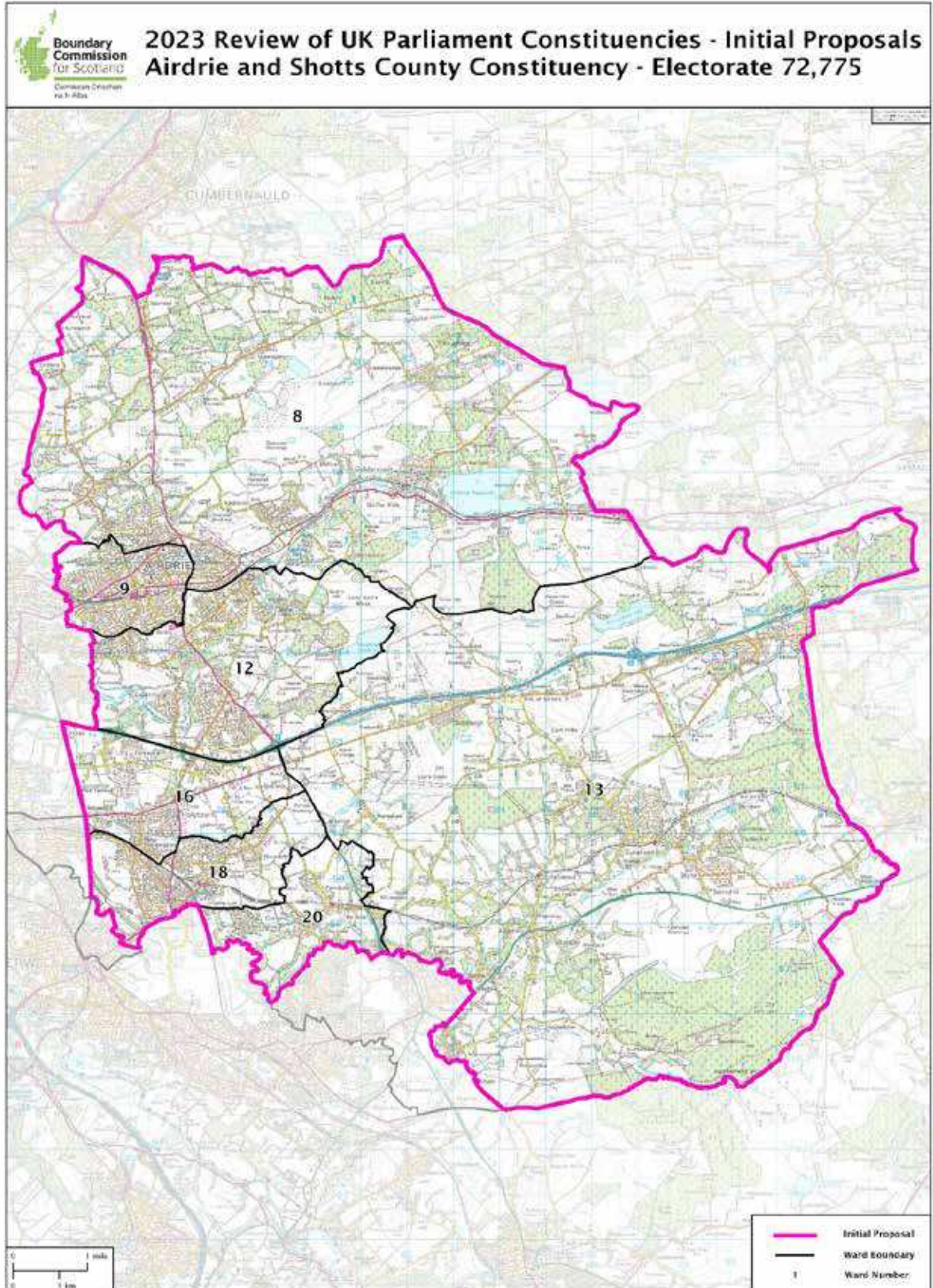


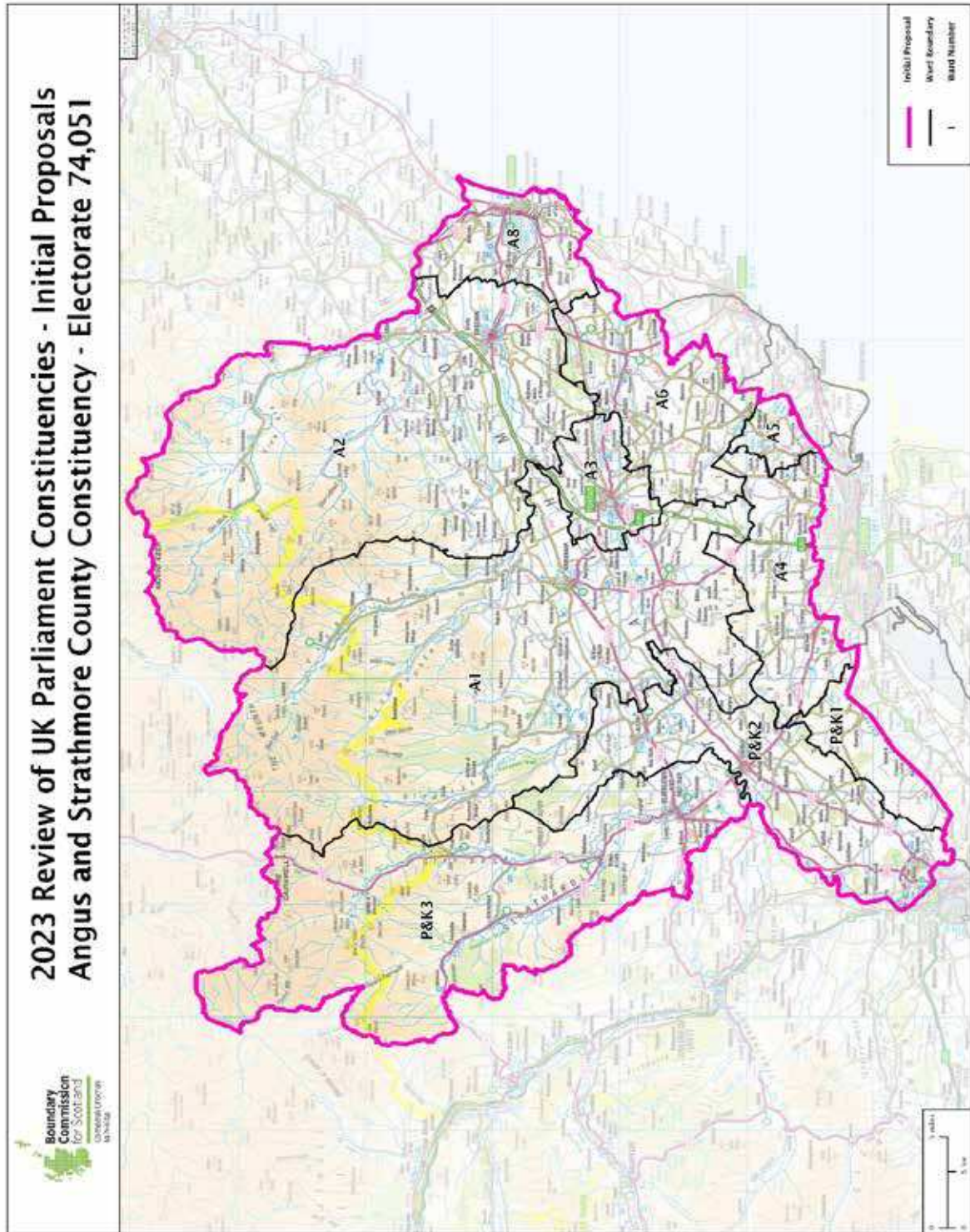
Public Consultation
2023 Review of UK Parliament Constituencies
Initial Proposals - Central Belt

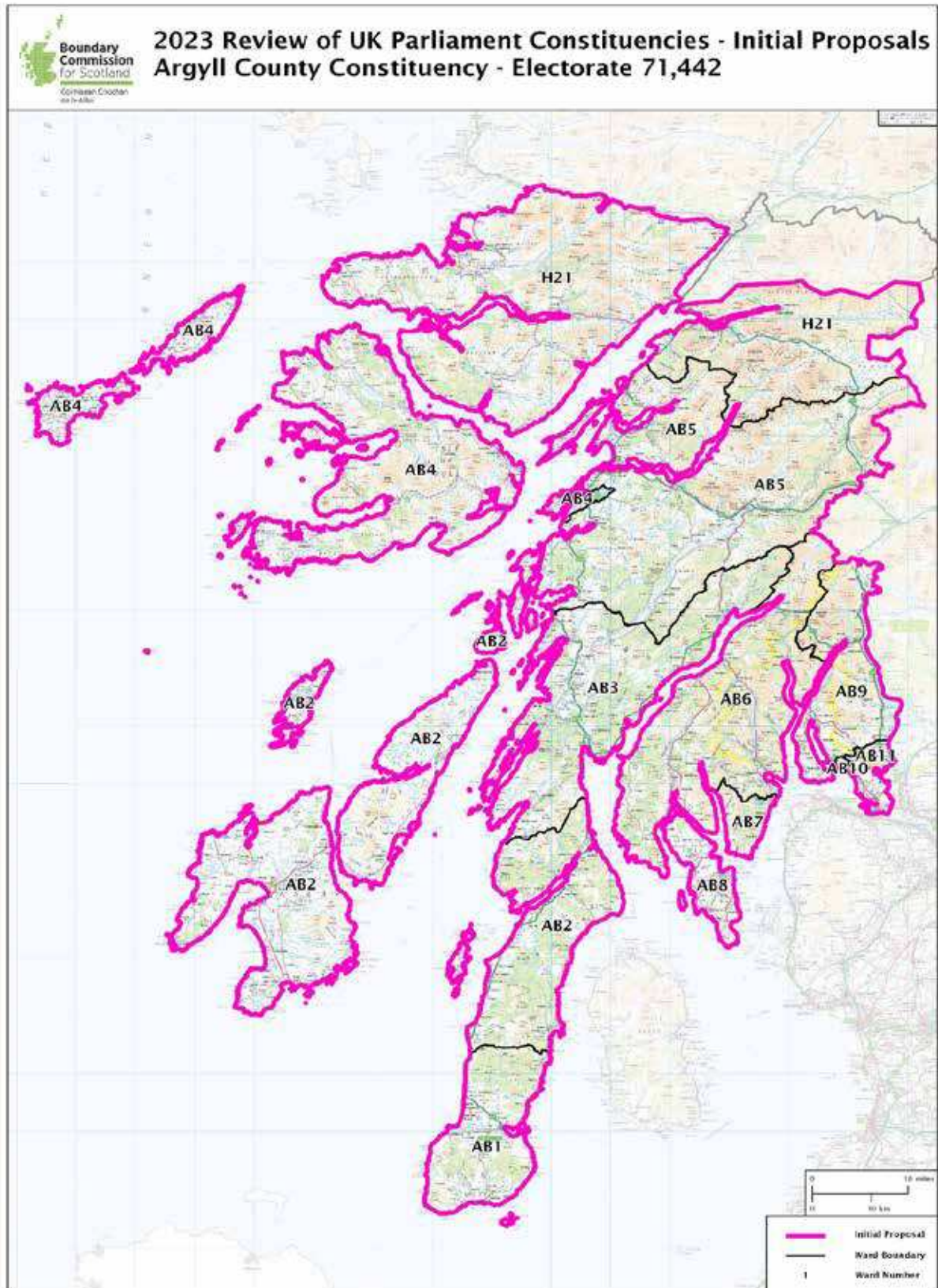


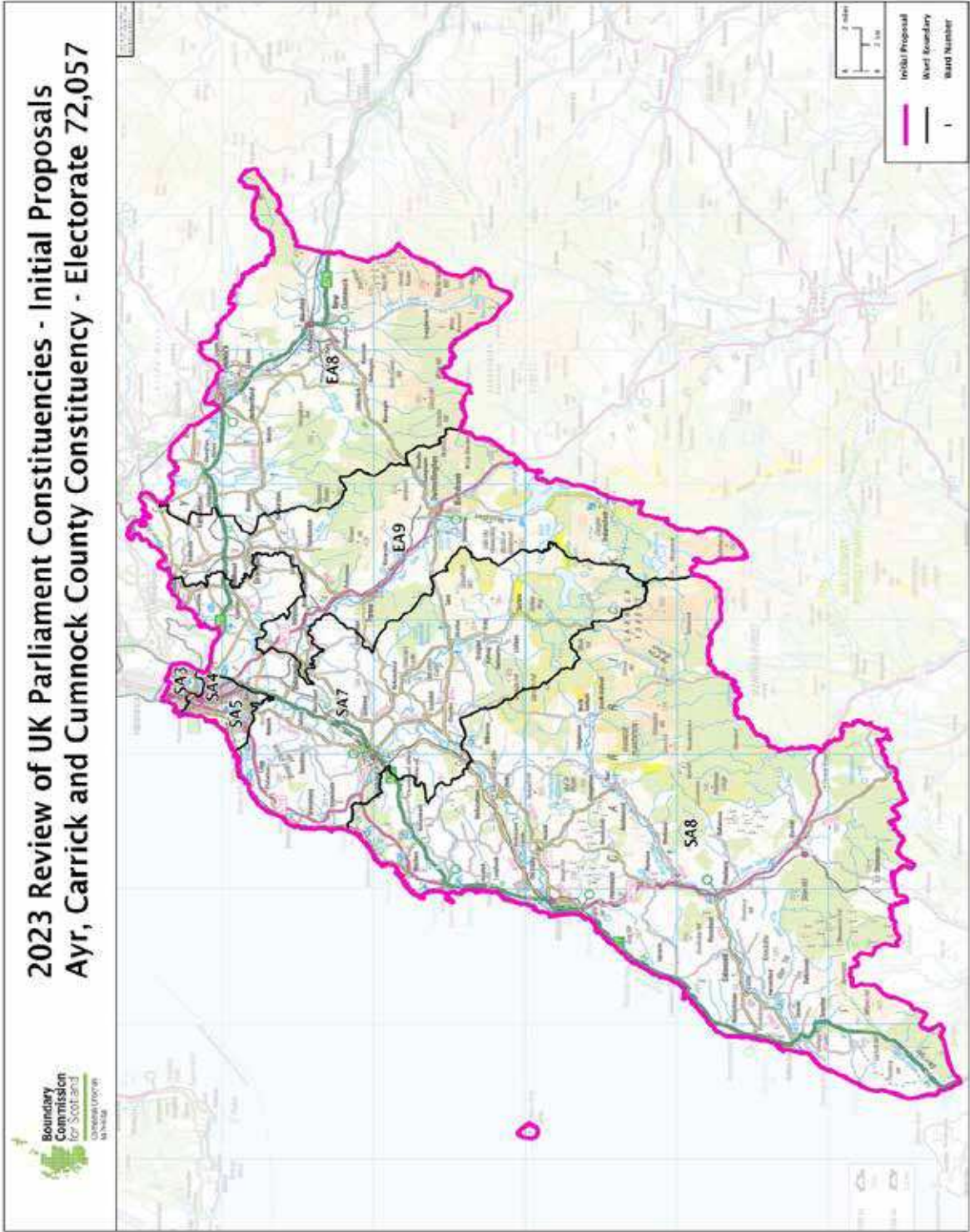


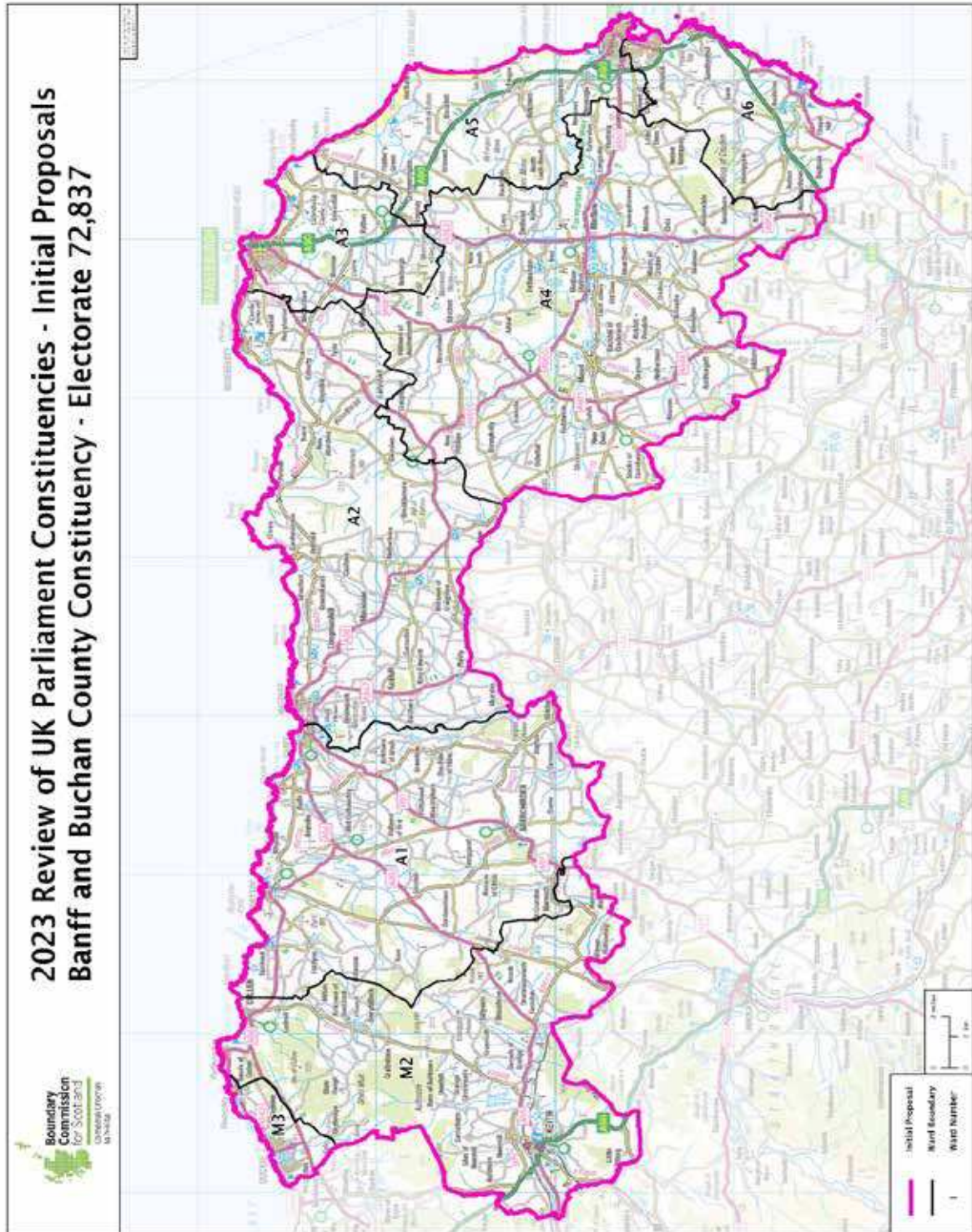












Boundary Commission for Scotland
2023 Review of UK Parliament Constituencies - Initial Proposals

