

MORAY COUNCIL - APPENDIX 2
BUDGET MONITORING REPORT
QUARTER 3 to 31st DECEMBER 2019

Service	Revised Budget 2019/20 £000s	Estimated Outturn 2019 £000s	Anticipated Variance £000s	Variance vs Base Budget %
Lifelong Learning Culture & Sport	9,698	9,388	310	3.2%
Integrated Children's Services	31,515	31,068	447	1.4%
Schools	60,523	60,358	165	0.3%
General Services Housing & Property	3,122	2,792	330	10.6%
Direct Services	21,889	21,866	23	0.1%
Development Services	3,093	3,116	(23)	(0.7)%
Corporate Services	11,432	10,545	887	7.8%
Chief Executive	1,724	1,622	102	5.9%
Other Services	1,992	2,133	(141)	(7.1)%
SERVICES excl HEALTH & SOCIAL CARE	144,988	142,888	2,100	1.4%
Health & Social Care (IJB)	42,257	43,964	(1,707)	(4.0)%
Health & Social Care (Non IJB)	(28)	128	(156)	557.1%
Adjustment to reflect cost sharing agreement			1,075	
TOTAL SERVICES incl HEALTH & SOCIAL CARE	187,217	186,980	1,312	0.7%
Loans Charges	13,507	13,300	207	1.5%
Provision for Contingencies and Inflation	546	168	378	69.2%
Additional Costs	4,574	2,299	2,275	49.7%
Unallocated Savings	2,435	1,691	744	30.6%
TOTAL PROVISIONS	7,555	4,158	3,397	45%
TOTAL GENERAL SERVICES EXPENDITURE	208,279	204,438	4,916	2%
Funded By:				
Scottish Government Grant	159,543	159,543	0	0.0%
Council Tax	43,356	43,356	0	0.0%
Funded From Reserves:				
DSM			0	0.0%
DSM c/f	10	10	0	0.0%
General	5,370	1,529	3,841	71.5%
MIJB Adjustment			1,075	0.0%
TOTAL FUNDING	208,279	204,438	4,916	2.4%
OVERALL VARIANCE	0	0	0	

Commentary on Quarter 3 Performance

ICS: Underspends: relate primarily to Fostering and adoption services. Due to a large movement from foster carers to kinship carers ,improved monitoring of the travel to school service and adoption placements.

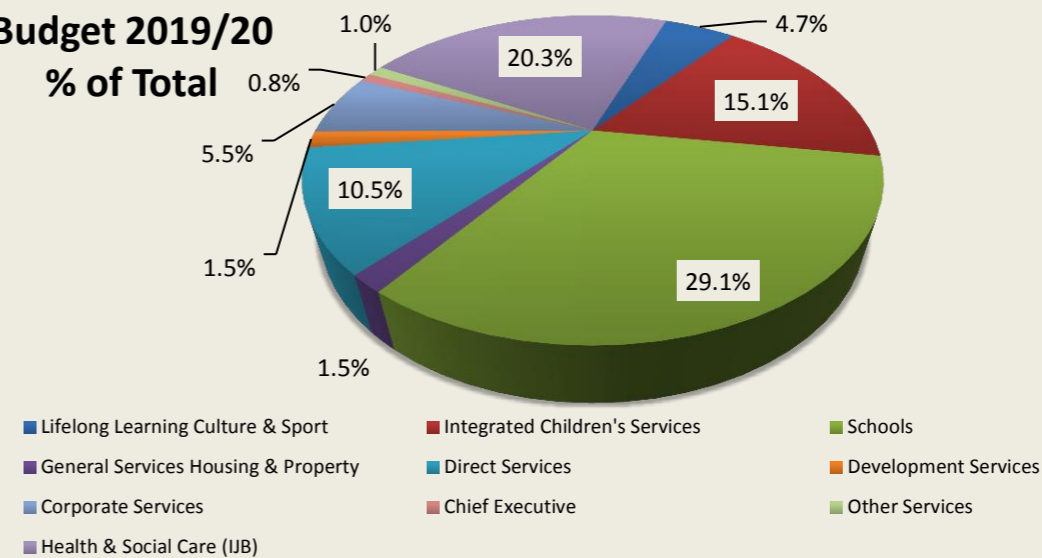
Chief Executive: £102k underspend primarily due to staffing.

Health & Social Care services for services devolved to MIJB are expected to overspend by £1,707k

One off income received in General Services Housing & Property of £417k for insurance refund and in Corporate services of £908k for income from VAT Leisure review.

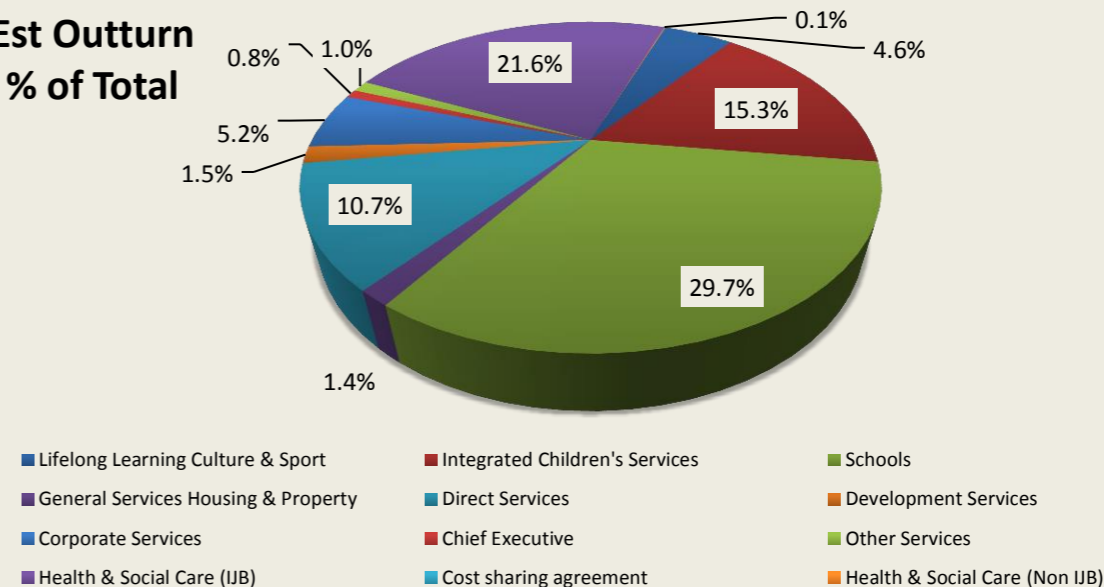
Budget 2019/20

% of Total



Est Outturn

% of Total



Est Outturn Variance to Budget (excl Loans & Provisions)

