

APPENDIX 2

MORAY COUNCIL

Response to Consultation issued by Scottish Government on

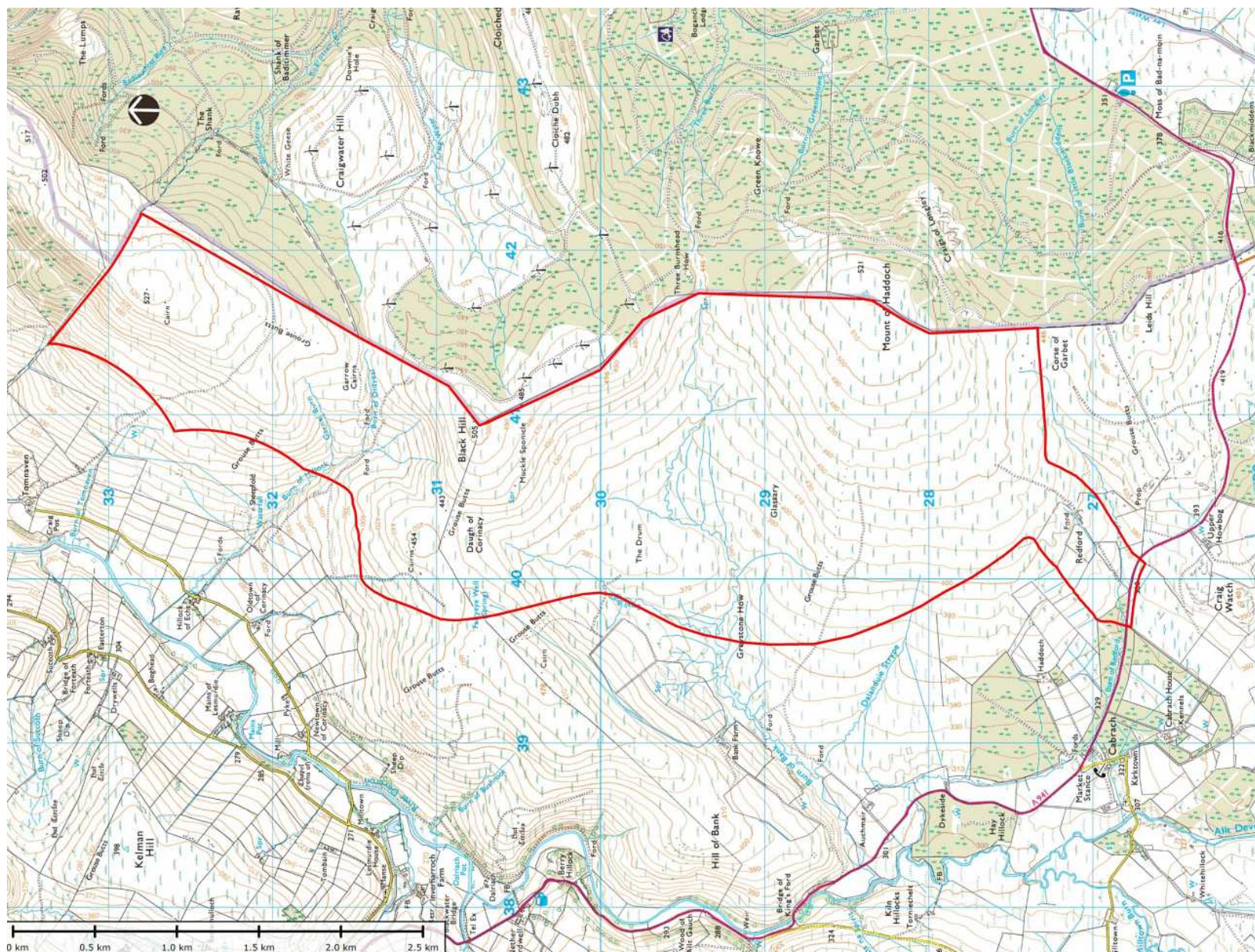
APPLICATION FOR S.36 CONSENT

CLASHINDARROCH WINDFARM EXTENSION, CABRACH.

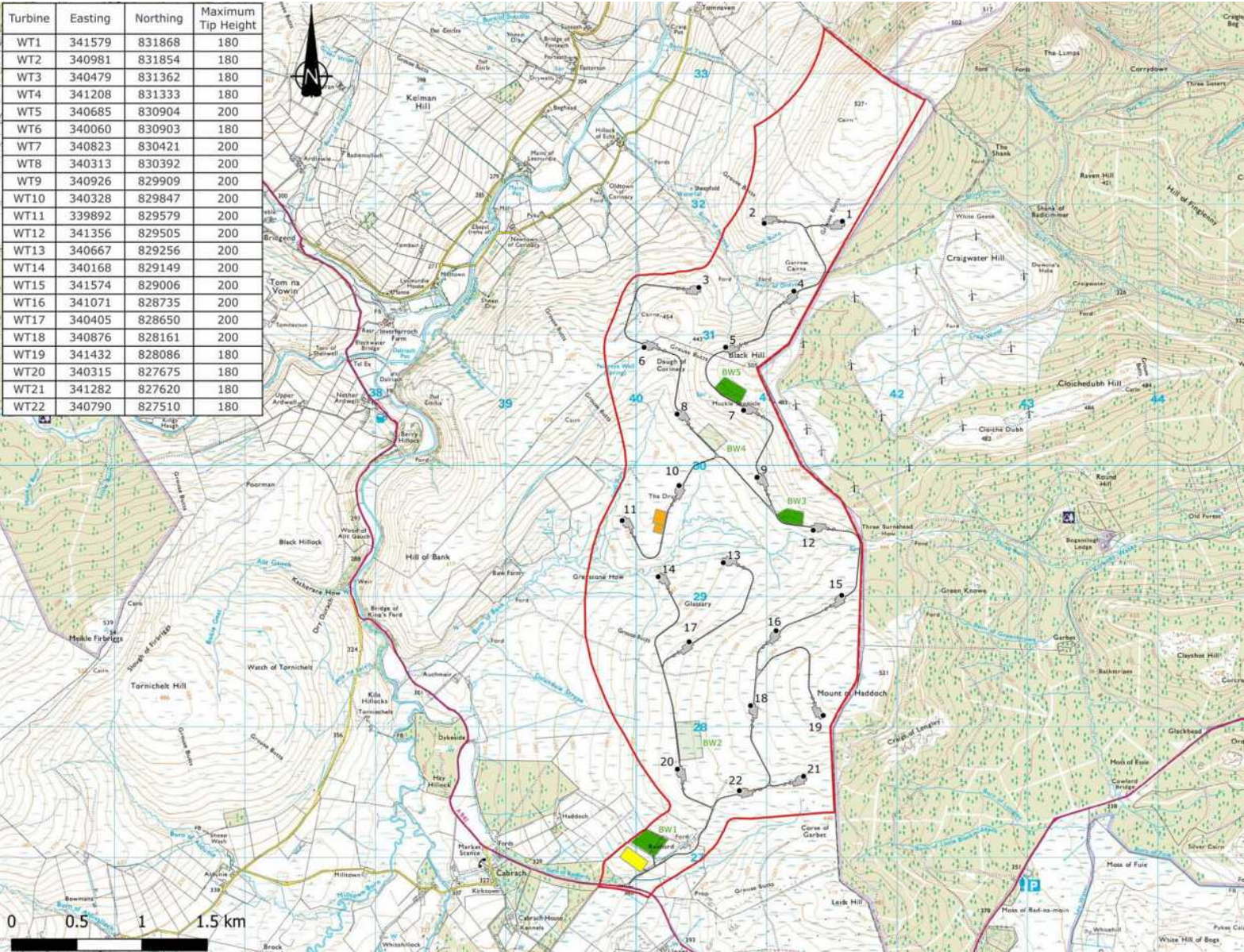
(MORAY COUNCIL REFERENCE 23/00047/S36)

- Location Plan
- Site layout plan
- Indicative compound elevations
- Typical turbine details 180m
- Typical turbine details 200m

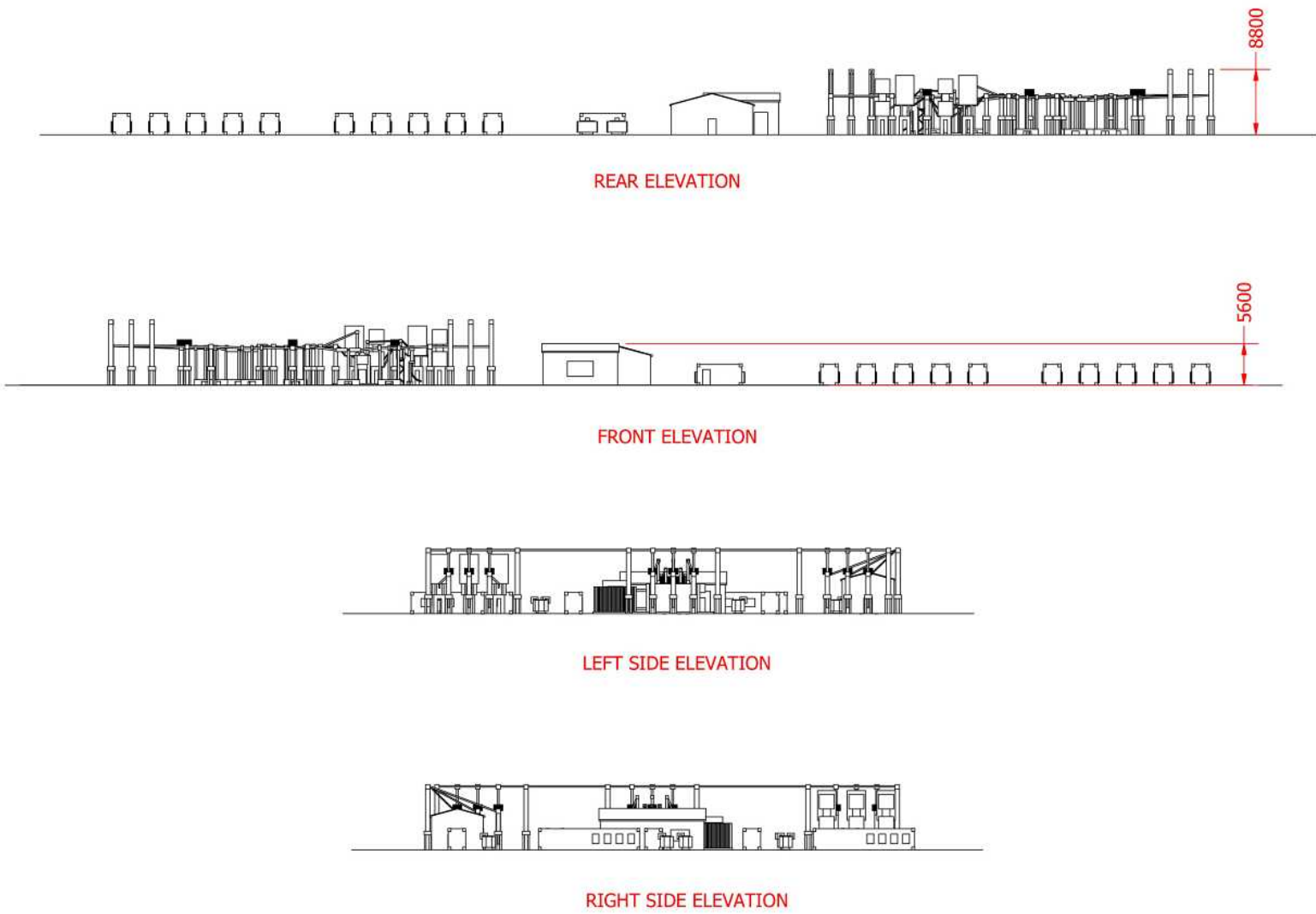
Location plan



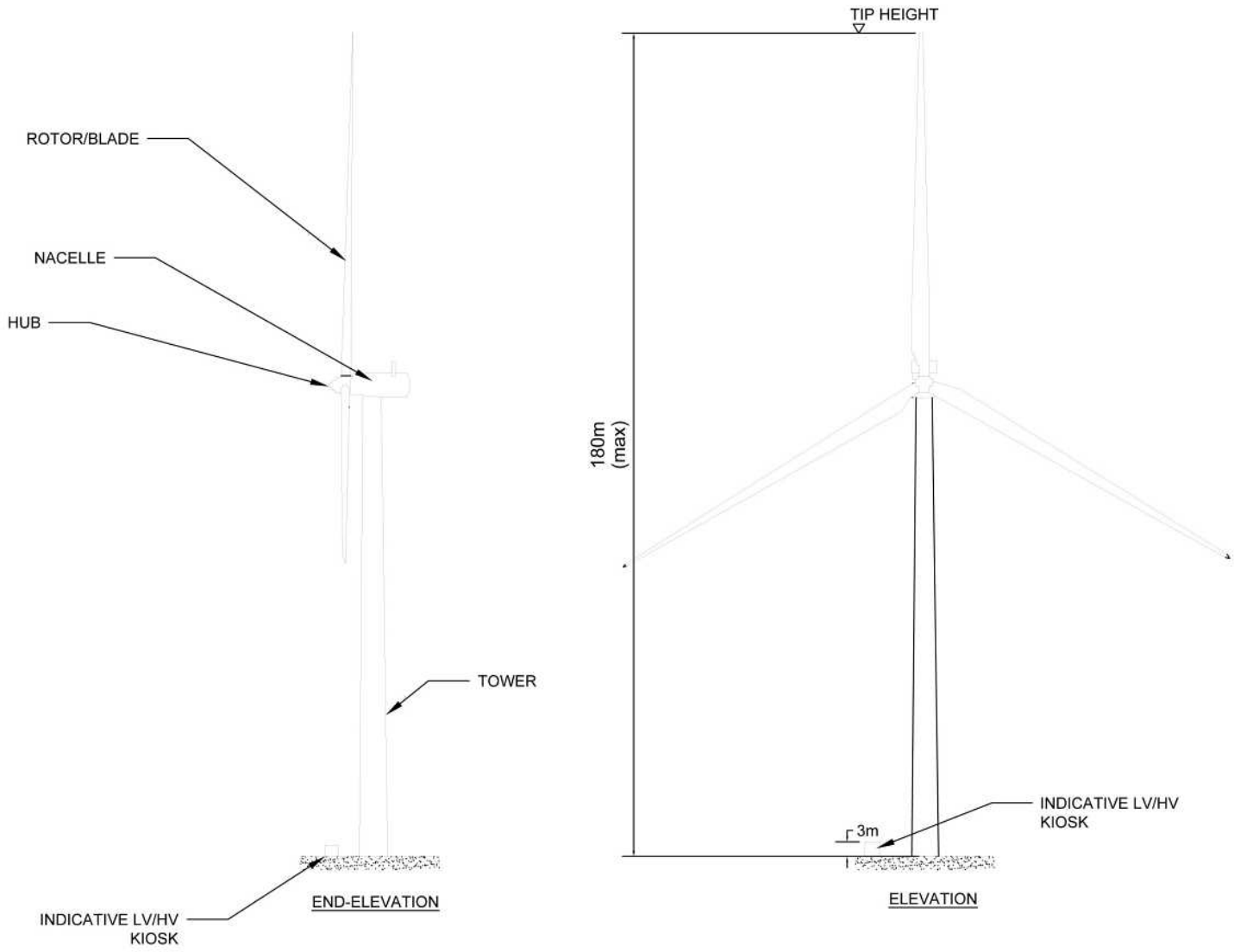
Site layout



Indicative compound elevations



Wind Turbine 180M



Wind Turbine 200M

