

2 SCHEME DEVELOPMENT

2.1 PROCESS

2.1.1 The need for a vehicle activated sign or speed indicator device to address a speed related road safety problem shall be identified by the Welsh Government, or it's Trunk Road Agents following analysis of personal injury collisions, or from complaints raised by members of the public. The process for considering whether a vehicle activated sign or speed indicator device should be provided follows the same methodology, set out in the flowchart in Figure 1 below.

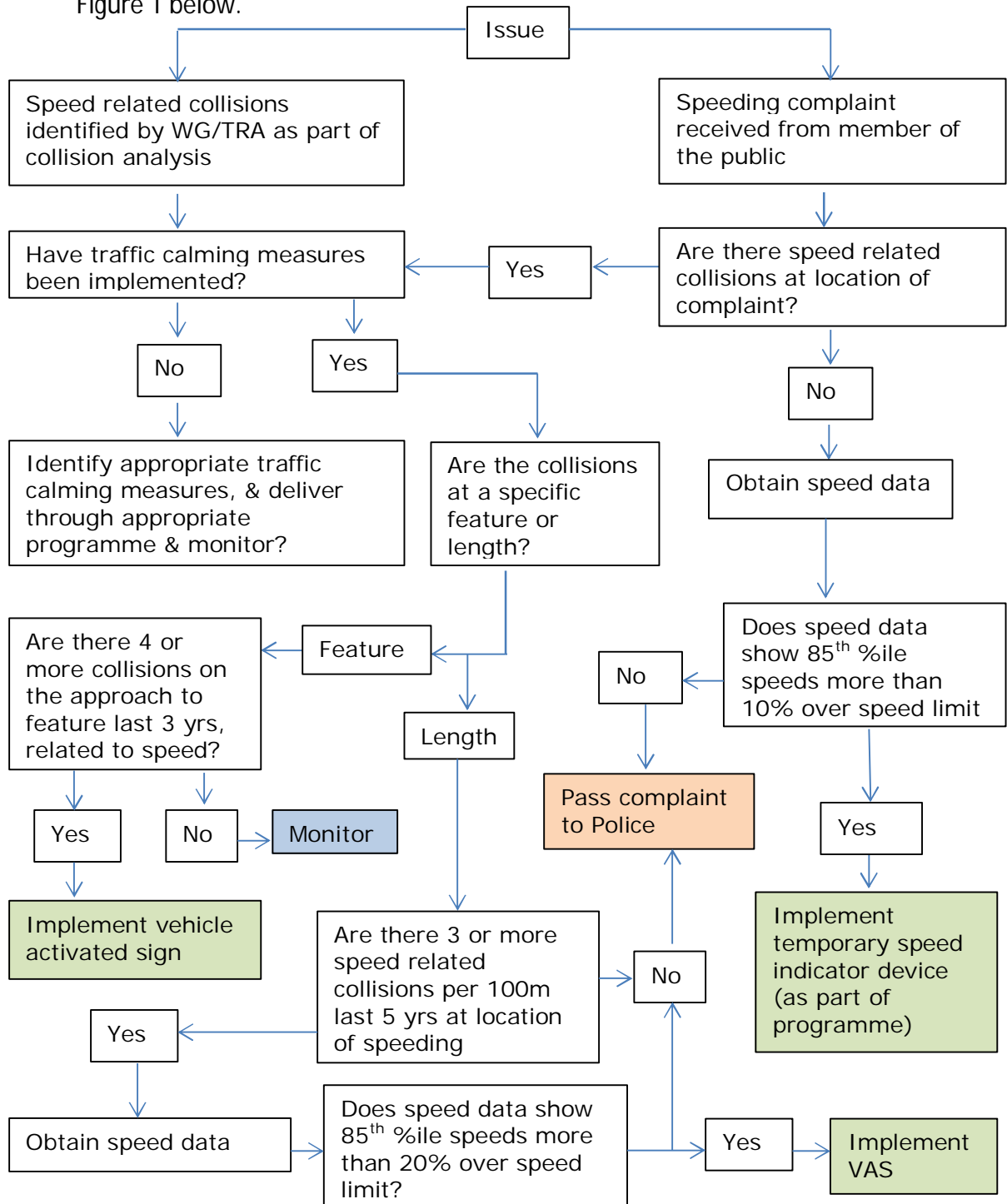


Figure 1 - Process for establishing whether a vehicle activated sign or speed indicator device should be provided at a location on the trunk road network