

MORAY COUNCIL - APPENDIX 2
BUDGET MONITORING REPORT
QUARTER 2 to 30th SEPTEMBER 2019

Service	Revised Budget 2019/20 £000s	Estimated Outturn 2019 £000s	Anticipated Variance £000s	Variance vs Base Budget %
Lifelong Learning Culture & Sport	9,709	9,595	114	1.2%
Integrated Children's Services	31,591	31,250	341	1.1%
Schools	60,697	60,700	(3)	(0.0)%
General Services Housing & Property	3,148	2,952	196	6.2%
Direct Services	21,740	22,055	(315)	(1.4)%
Development Services	3,090	3,019	71	2.3%
Corporate Services	11,301	11,415	(114)	(1.0)%
Chief Executive	1,764	1,592	172	9.8%
Other Services	1,987	2,025	(38)	(1.9)%
SERVICES excl HEALTH & SOCIAL CARE	145,027	144,603	424	0.3%
Health & Social Care (IJB)	42,068	43,562	(1,494)	(3.6)%
Health & Social Care (Non IJB)	(28)	147	(175)	625.0%
Adjustment to reflect cost sharing agreement			941	
TOTAL SERVICES incl HEALTH & SOCIAL CARE	187,067	188,312	(304)	(0.2)%
Loans Charges	13,507	13,290	217	1.6%
Provision for Contingencies and Inflation	607	152	455	75.0%
Additional Costs	5,038	3,726	1,312	26.0%
Unallocated Savings	978	888	90	9.2%
TOTAL PROVISIONS	6,623	4,766	1,857	28%
TOTAL GENERAL SERVICES EXPENDITURE	207,197	206,368	1,770	1%
Funded By:				
Scottish Government Grant	159,335	159,335	0	0.0%
Council Tax	42,485	42,485	0	0.0%
Funded From Reserves:				
DSM			0	0.0%
DSM c/f	10	10	0	0.0%
General	5,368	4,539	829	15.4%
MIJB Adjustment			941	0.0%
TOTAL FUNDING	207,198	206,369	1,770	0.9%
OVERALL VARIANCE	1	1	0	

Commentary on Quarter 2 Performance

ICS: Underspends: relate primarily to Fostering and adoption services. Due to a large movement from foster carers to kinship carers ,improved monitoring of the travel to school service and adoption placements.

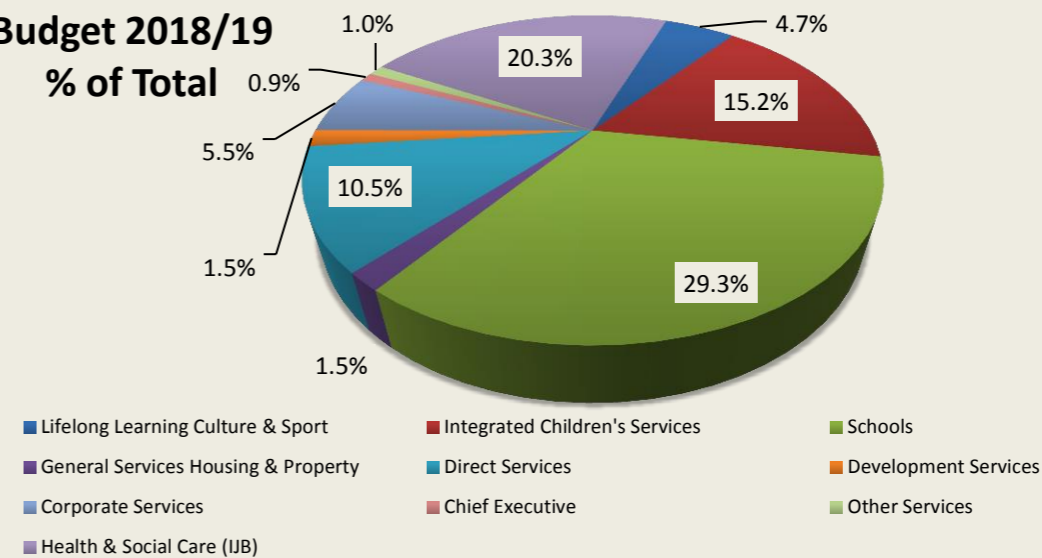
Chief Executive: £172k underspend primarily due to staffing.

Health & Social Care services for services devolved to MIJB are expected to overspend by £1,494k

Direct services: Underspend in grounds maintenance £66k. Overspends in Fleet £45k, Waste £122k. Catering £66k, transport £48k and vacancy factor not achieved by £123k

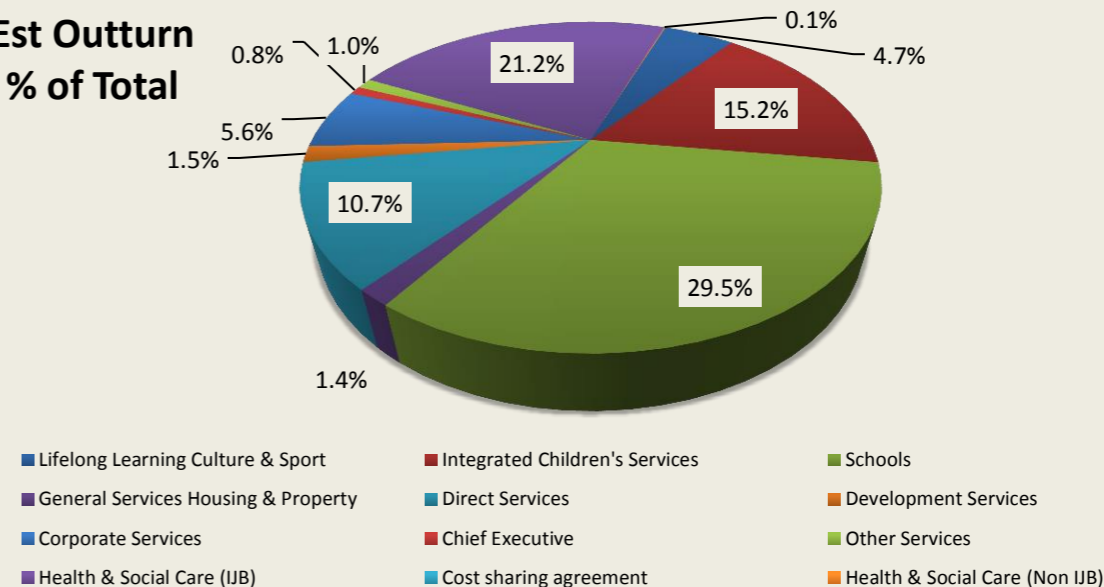
Budget 2018/19

% of Total



Est Outturn

% of Total



Est Outturn Variance to Budget (excl Loans & Provisions)

