

Action from Education, Children’s and Leisure Services Committee on 14 May 2024

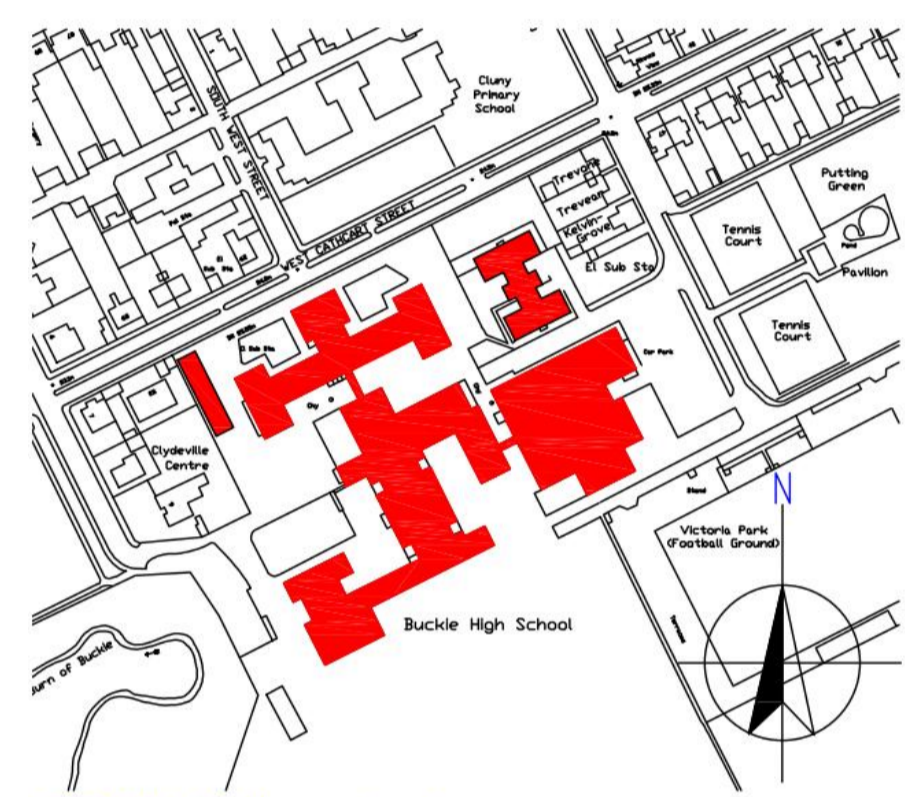
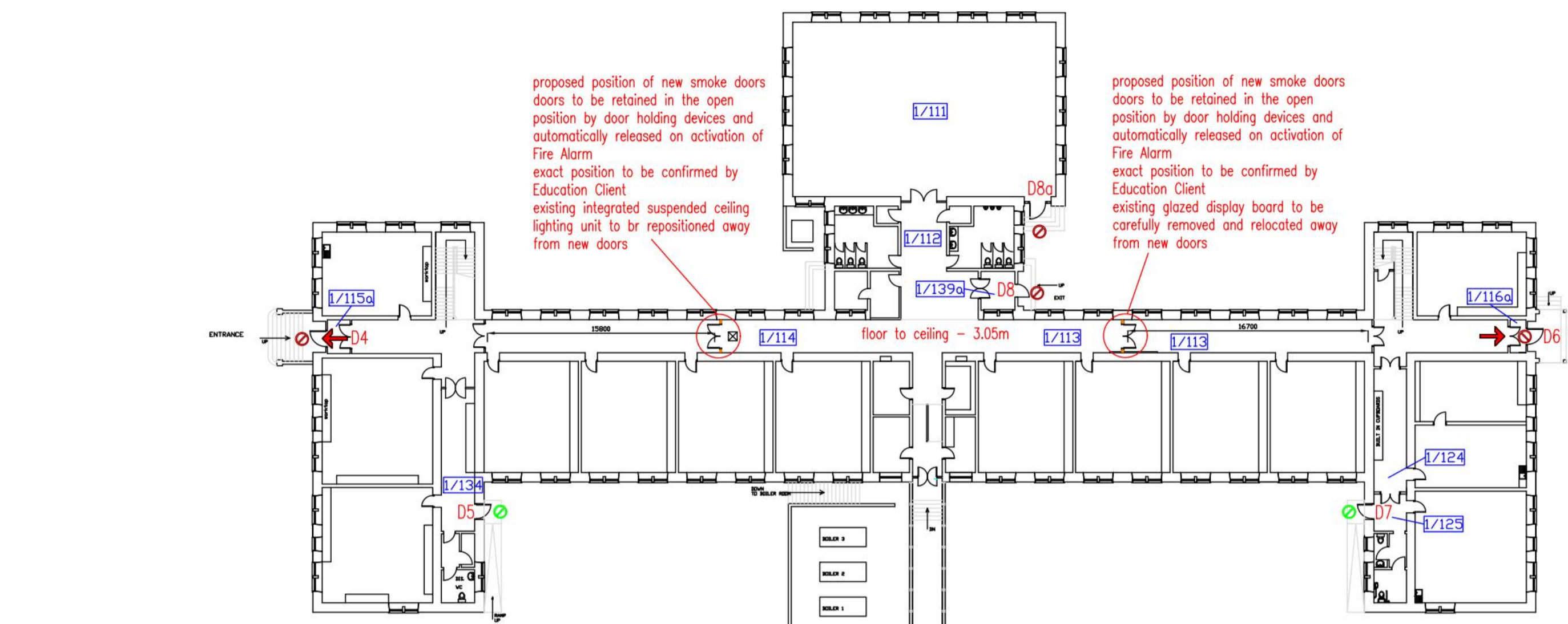
Agenda Item No:	10a
Report Title	Learning Estate Strategy – Programme Delivery Update
Responsible Officer:	Andy Hall

Information Sought:	Response:
<p>Buckie High School Provide information on works planned at Buckie HS to improve security</p> <p>Provide detail on the Suitability rating provided in Appendix 3 given that all works had not been completed</p> <p>Provide information on how the rating was assessed along with details of works already undertaken and proposed to take place during the summer</p>	<p>The fire/security door upgrades and the reception ‘control of entry’ works will commence on 1 July 24 and complete before the school reopens for the 2024/25 academic year in August. The work will see upgrade of 16 security doors (majority external) and a new fob-controlled entry doors from the main reception area into the school. Locations of the door upgrades is at Appendix 1.</p> <p>Suitability assessments for all schools are undertaken in accordance with the guidance and instruction detailed within the Scottish Government’s Suitability Core Facts documentation (LINK).</p> <p>Suitability is a measure of whether a school is fit for the purpose of delivering the education curriculum. That is whether its design and layout enhance its function and use, whether there is space and scope to accommodate all the demands and services, whether it is ‘inclusive’ and accessible to those with disabilities, how capable it is of adjustment or adaptation, how able to ‘flex’ in response to future, sometimes unforeseen changes in the scale and nature of demand and usage, to changes in climate and to changes in ICT and other technology and the ways in which education may be delivered.</p> <p>The most recently published Suitability assessment for Buckie High School was January 2023. It highlighted issues with security and safety in a number of areas of the school, including the Reception Area and Circulation Spaces which were assigned a C (Poor) Suitability rating. I asked the Learning Estate Team (which included recent Buckie HS Head teacher) to review the 2023 Assessment and the high level assessment is</p>

	<p>detailed below. Note that Safety and Security covers all areas of the school and overall it is assessed as a low B (63%).</p> <p>A 'C Suitability' rating translates "to major problems and/or not operating optimally (the school buildings and grounds impede the delivery of activities that are needed for children and communities in the school)". With specific reference to Safety and Security a C Suitability rating is assigned where 'learning and teaching spaces have safety and security issues which impede learning and teaching'</p> <p>Although security is a feature of the assessment any infrastructure issues relating to security should be addressed under the Condition assessment. Buckie High School is rated as overall Condition C (Poor). Within this rating Externals Doors are specifically rated as Condition C (Poor) – it is the deficiencies here that will be addressed within the planned works.</p>
--	--

MORAY COUNCIL - PROPERTY SUITABILITY SURVEY									
Property Name									
Property Address									
Family Group									
LA Code									
Centre (SEED) Number									
School Type									
Block Reference									
		Weighting		Factors					Overall Ranking
		Weightings - major %	Weightings - intermediate %	Functionality	Accessibility	Environmental Conditions	Safety & Security	Fixed Furniture & Fittings	
SECONDARY SCHOOL									
Learning & Teaching Spaces (General)	25							B	
Non-practical classrooms	Departments / Faculties								
	ASN / SFL	7.5	B	B	B	C	C	B	
	Business Studies	8.5	B	B	C	C	C	C	
	Computers / ICT	8.5	B	B	C	C	C	C	
	English	8.5	B	C	C	C	C	C	
	Geography	8.5	B	B	C	B	C	B	
	Guidance	8.5	B	B	C	B	C	B	
	History	8.5	B	B	C	B	C	B	
	Maths	8.5	B	B	C	C	C	C	
	Modern Languages	8.5	B	C	C	C	C	C	
	Modern Studies	8.5	B	B	C	B	C	B	
	RMPS	8.5	B	B	C	B	C	B	
Collaborative learning space / Private Study		7.5	B	B	C	C	C	C	
Learning & Teaching Spaces (Practical)	25							B	
Science		12	A	B	B	B	A	B	
Technical		12	B	B	A	B	C	B	
Art		12	B	A	B	C	B	B	
Drama		12	B	A	A	B	A	A	
Home Economics		12	B	D	B	B	A	B	
Music / practice rooms		12	A	A	B	B	A	A	
Other external learning areas		4	A	B	N/A	C	B	B	
PE / games areas – internal		12	B	B	B	C	B	B	
PE / games areas – external		12	A	B	N/A	C	B	B	
Internal Social Spaces	15							B	
Assembly / exam area		30	A	C	B	C	B	B	
Pupil social areas		20	B	B	B	C	N/A	C	
Dining / Kitchen / Servery		40	B	B	B	B	A	B	
Staff rooms		10	B	C	B	B	A	B	
Internal Facilities	15							B	
Library / learning resource area		12.5	B	B	B	B	B	B	
Reception		7.5	B	C	C	C	B	C	
Management offices		7.5	A	A	A	C	A	A	
Admin offices		7.5	B	B	B	C	B	B	
Meeting rooms		7.5	A	B	B	C	B	B	
Staff bases		7.5	B	B	B	B	B	B	
Toilets		30	B	B	B	C	B	B	
Circulation areas		20	C	C	B	C	NA	C	
External Social Spaces	10							A	
External play & social areas		100	B	A	B	B	B	A	
External Facilities	10							A	
Drop-off / pick up areas		40	C	C	B	B	B	A	
Car parks		40	A	A	B	B	B	A	
Circulation areas		10	A	A	B	C	B	A	
Bike storage		5	B	B	B	B	B	A	
External storage		5	C	B	B	C	B	A	
SUITABILITY SUMMARY			Factors						
			Functionality	Accessibility	Environmental Conditions	Safety & Security	Fixed Furniture & Fittings	TOTALS	
SECONDARY SCHOOL									
Learning & Teaching Spaces (General)			B	B	C	B	C	B	
Learning & Teaching Spaces (Practical)			A	B	B	B	B	B	
Internal Social Spaces			B	B	B	B	A	B	
Internal Facilities			B	B	B	C	B	B	
External Social Spaces			B	A	B	B	B	A	
External Facilities			B	B	B	B	B	A	
Score			78.56%	75.19%	70.54%	63.66%	73.04%	74.32%	
TOTALS			B	B	B	B	B	B	

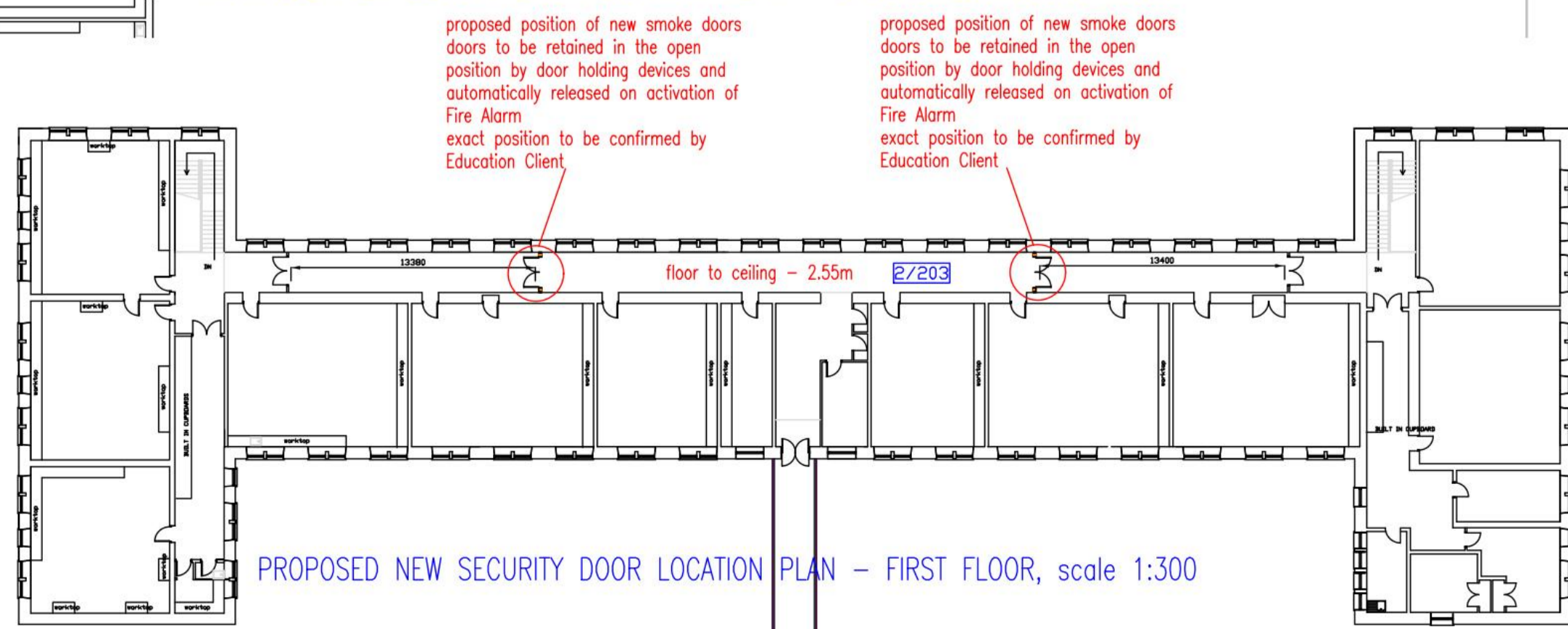
Once completed please return to committee.services@moray.gov.uk for publication on CMIS and circulating to Elected Members and copy in CMTAdmin@moray.gov.uk



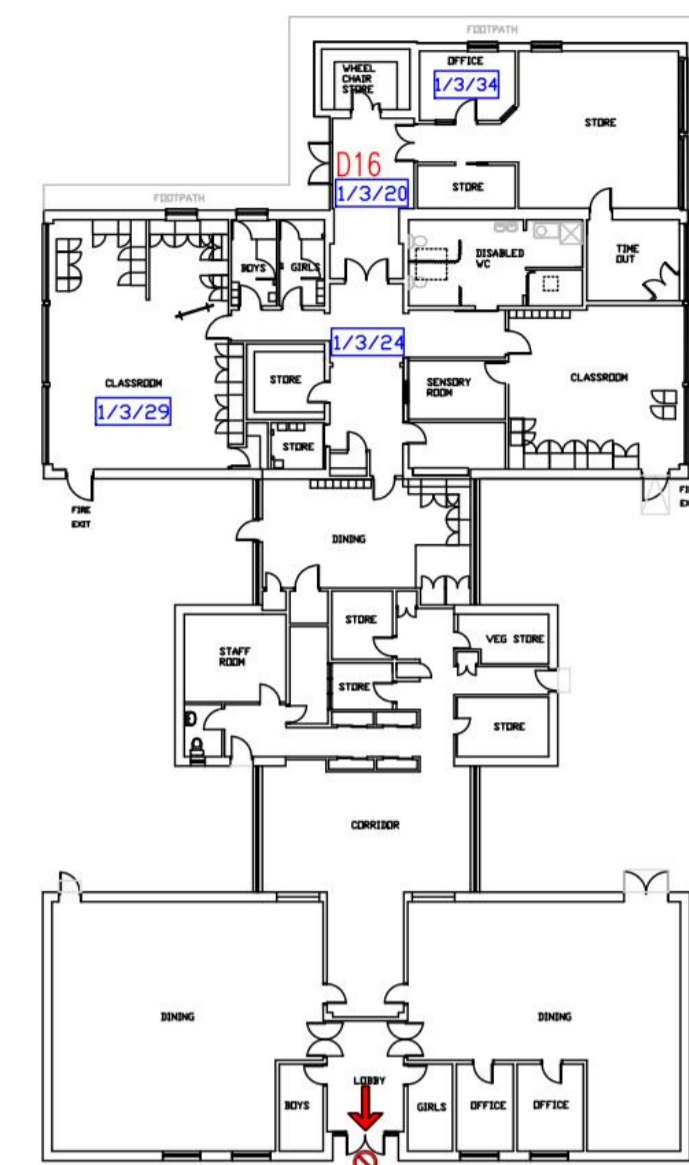
LOCATION PLAN, scale nts



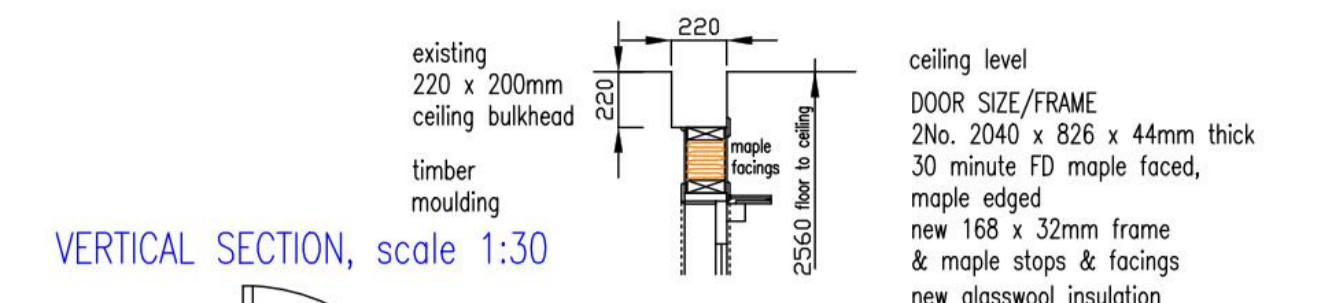
PROPOSED NEW SECURITY DOOR LOCATION PLAN - GROUND FLOOR, scale 1:300



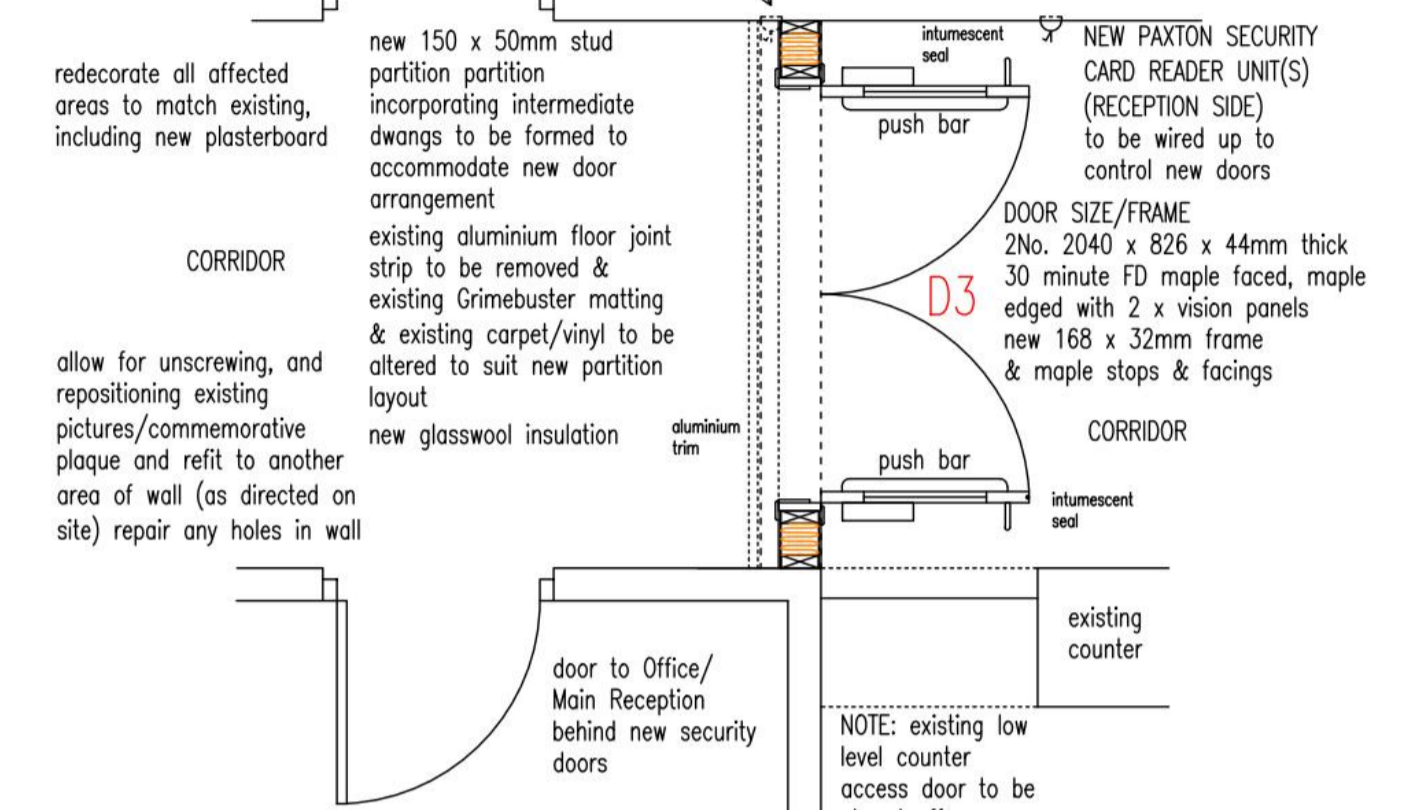
PROPOSED NEW SECURITY DOOR LOCATION PLAN - FIRST FLOOR, scale 1:300



CANTEEN & SEN BASE PLAN, scale 1:300

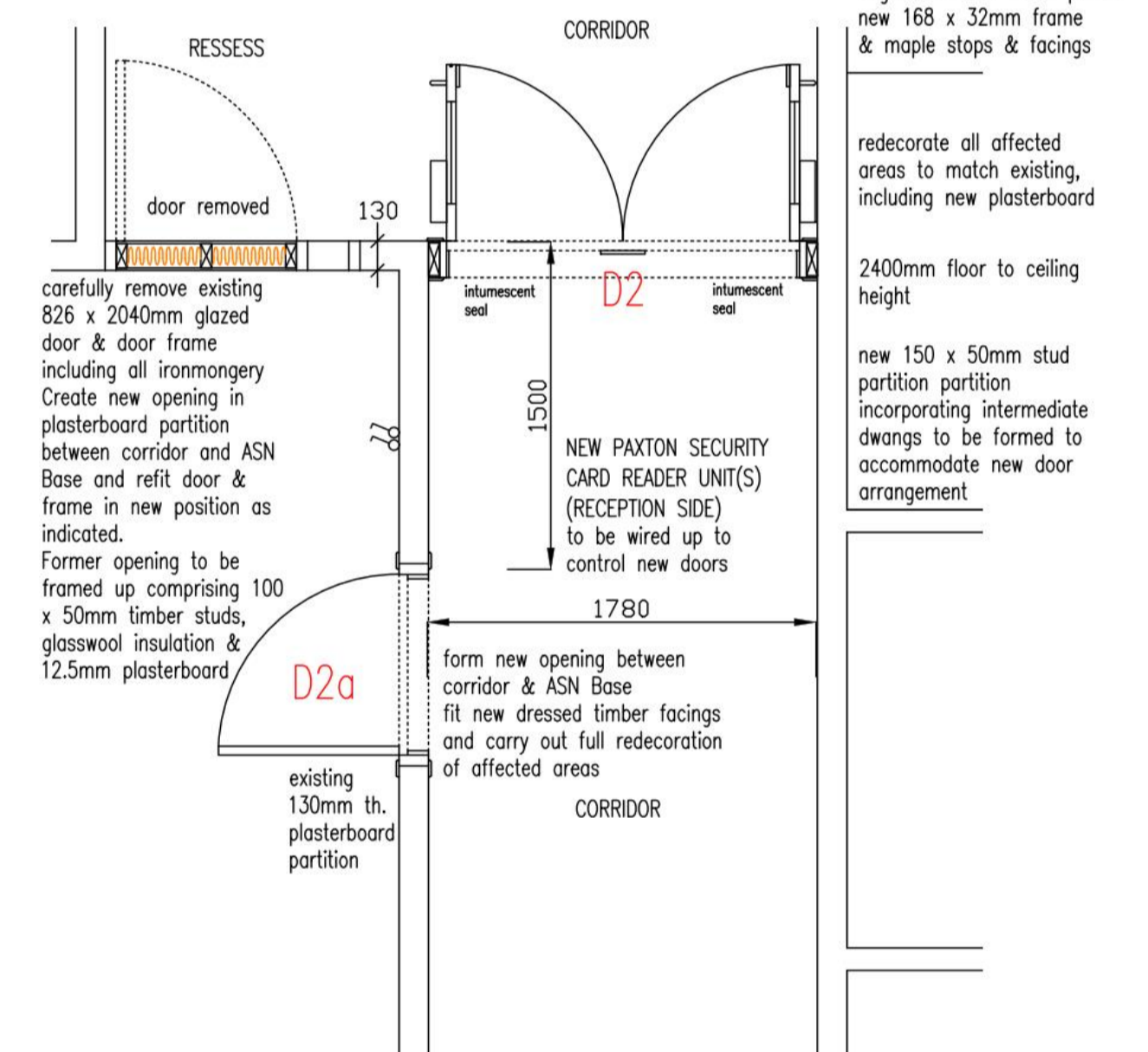


VERTICAL SECTION, scale 1:30



PLAN SECTION, scale 1:30

PROPOSED NEW SECURITY DOOR ARRANGEMENT AT SCHOOL MAIN RECEPTION - D3



PLAN SECTION, scale 1:30

PROPOSED NEW SECURITY DOORS IN CORRIDOR D2 & RELOCATED DOOR TO ASN ROOM D2a

HEALTH & SAFETY INFORMATION
 RISK - due to manual handling of materials to be avoided.
 RISK - associated with the use of power tools to be avoided at all times.
 RISK - associated with working off ground.
 RISK - Associated with carrying out extensive electrical rewiring. All works to be compliant with current IEE Regulations. All works to be taken when working within a School Campus.
 CARE - to be taken when working within a School Campus.
 COSHH - Regulations to be adhered to. Also see relevant Asbestos Report(s).

KEY
 Doors D1 - D16
 L7159a ASSET MANAGEMENT ROOM NUMBERS

Door Access Key
 Door Control Access In and Out
 Fire Escape External Fire Escape

MAIN CONTRACTOR TO CHECK COMPATIBILITY OF ALL COMPONENTS TO ENSURE FIT
 MAIN CONTRACTOR TO CHECK ALL SIZES ON SITE PRIOR TO ORDERING MATERIALS
 DRAWING TO BE READ IN CONJUNCTION WITH DOOR SCHEDULE DRAWINGS AND BLACKWOODS ELECTRICAL DRAWINGS

Project: BUCKIE HIGH SCHOOL SECURITY UPGRADE		ENVIRONMENTAL SERVICES Design & Construction Manager The Moray Council	
Drawing Title: DOOR LAYOUT PLAN & DOOR DETAILS		Council Offices, High Street, Elgin, IV30 1BX Telephone: 01343 563701 Fax: 01343 563978	
Scale: As Noted	Size: A1	Drawn: MJAR	
Date: 12/01/24	Revision Number: 61632/D01	Revision:	