



This paper is presented to the November 2023 Moray IJB to give an update on the progress of the Moray Growth Deal, Rural Centre of Excellence for Digital Health and Care Innovation

This £5 million UK Government funded programme of the Rural Centre of Excellence (RCE) Research and Development (R&D) programme as part of Moray Growth Deal, commenced in late 2021 with the ambition to create a unique ecosystem in the Moray region to foster economic development and create jobs through the creation of a physical Demonstration and Simulation environment (DSE) at UHI Moray, underpinned by a virtual R&D infrastructure, five living labs and a robust skills and workforce development programme.

Working closely with the citizens, health and social care Moray, NHS Grampian and third sector organisations, the living labs methodology uses co-design approaches to validate and address key national and local strategic priorities in order to release clinical and care capacity and make services more accessible enabled by digital to meet targeted demand, and to improve the health and wellbeing outcomes for the citizens of Moray.

http://www.moray.gov.uk/moray_standard/page_114144.html

The image below provides a visual representation of the R&D infrastructure, assets and Living Lab (LL) R&D themes and the skills programme being progressed within the RCE.

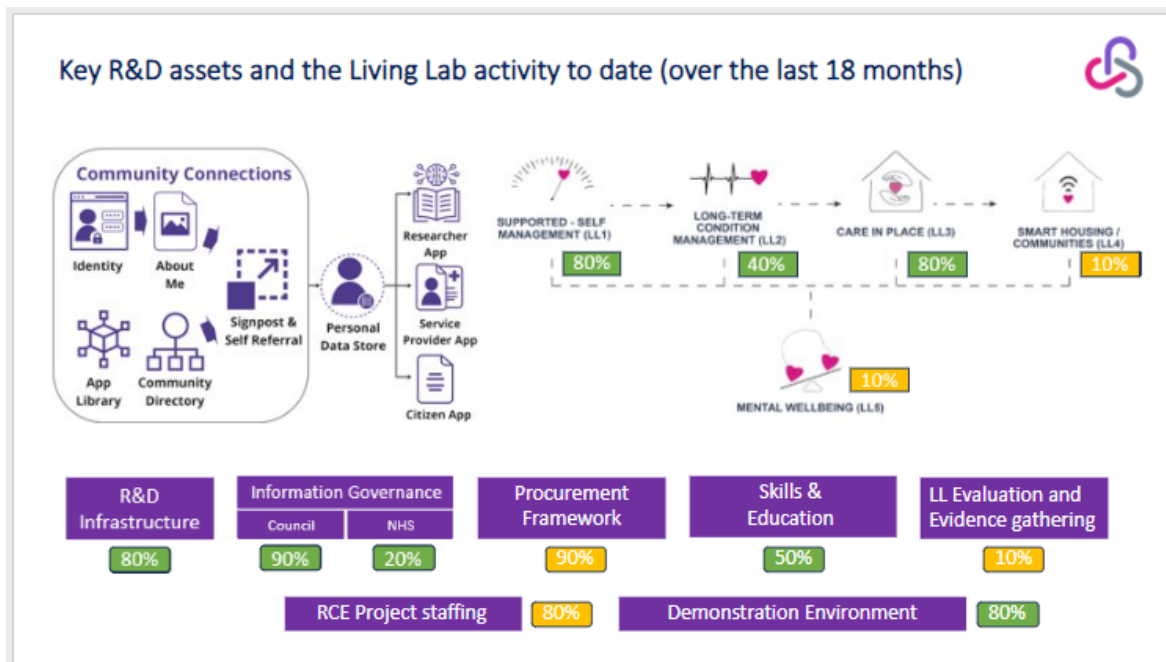


Image 1: Key R&D assets and the 5 Living Lab (LL) Themes

RCE Activity Update October-November 2023

Programme Update

DHI are progressing an options appraisal to mitigate the accruing underspend in year three of the programme due to timeline delays across the three early stage living labs. Emerging opportunities and learning through stakeholder engagement support a review of the original scope of LL4- Smart Housing and LL5 Mental Wellbeing, and the development of a unique platform that would integrate the full RCE infrastructure and assets to support health and social care services globally. This opportunity would require a no cost project programme extension but would have the potential for a significantly greater economic impact.

Living Lab Updates

LL1 Supported Self-Management: Final iterations and user testing via the Dietetic service are being completed for the weight management platform. A Data Protection Impact Assessment (DPIA) has been submitted to NHS Grampian and subject to its approval, the project will move to the real-world evidence stage in February 2024. A working group has been established to take forward the delivery plan, and an evaluation framework has been drafted.

LL2 Long Term Condition Management (NHS): The first call on the Dynamic Purchasing System (DPS) seeking industry partners to develop a solution to tackle access deprivation with an initial clinical focus of Type 2 Diabetes will close on the 15th of November. It is

anticipated that following tender evaluation, an award can be made to allow simulation work to commence in January 2024.

LL2 Long Term Condition Management (Community): This pathway will focus on the development of digital tools to support the Community Occupational Therapy Service via self and supported self-management assets. Initiate stage workshops have now been completed with stakeholders, and subject to approval, a call will be published in December 2023 via the DPS.

LL3 Care in Place: User testing has now been completed, with a final iteration of the community connections platform and personal data store assets in progress. This lab will move to a phased real world evidence stage in February 2024 for a minimum of 6 months, and an evaluation framework has been drafted to support this.

LL4 Smart Housing: Define and initiate work is underway for this living lab, with work commenced on developing an asset for the DSE in Elgin to demonstrate the benefits of the proactive and preventive use of combined telehealth and digital telecare/activity monitoring. This will be used as the basis to develop a state-of-the-art specification for new build smart enabled properties and prototype for testing ahead of the deployment into Leancoil Trust site properties by the MGD Housing Mix project team in 2027/28.

LL5 Mental Wellbeing: Engagement discussions are ongoing with statutory, and third sector services to agree most beneficial scope at this time.

It is likely that the following two distinct pathways will be developed, if capacity within H&SC and budget allow:

1. Mental wellbeing (MWB) pathway to develop tools and social prescribing linked to the early Connected Communities platform and personal data store to support early intervention and self-management
2. Mental health (MH) pathway to develop digital tools to support an aspect of statutory clinical services to be confirmed

Additional Scope Being Explored (Smart Communities)

Potential rescope and extension of RCE will use collective stakeholder feedback, emerging learning, and new opportunities to develop an international, multi sector collaboration to develop a unique innovative platform utilising holistic person-centred data gathered through the RCE infrastructure, assets and health and social care integration. This would enable population stratification and resource management at both an individual and population level to reduce waiting lists, increase capacity and alert to early indicators of decline to reduce hospital admissions and unscheduled care. The development of such an asset will require a timeline beyond June 2025 due to its complexity and need for inward investment, however the increased industry inclusion in the project would support RCE's

sustainability and economic growth contribution to the region through its international relevance and scalability.

Skills and Workforce

SkillsFest will be hosted by the RCE on 23rd November 2023 at UHI Moray, with a packed agenda featuring keynote speakers and a series of workshops, it will also include a soft launch of the recently developed micro credential courses for carers.

An academic call has been published seeking a partner to undertake a review of workforce training tools and identify gaps. This will inform the scope of a further skills development call in 2024.

Communication and Engagement

A refreshed communication strategy and sector specific plans have been developed and a working group has been set up to progress the delivery plan. A key area of the strategy outlines the need for a partnership approach between DHI, H&SCM, NHS G and third sector to develop workforce and citizen readiness for adoption of digital assets.

A full schedule of events to build awareness of the demographic need for change, and opportunities to participate in codesign to shape future assets is being finalised for 2024.

Evaluation

A framework for the academic evaluation is being developed by UHI to capture the integrative and living lab specific outcomes across the whole programme. Qualitative data and evidence.

Sustainability

The sustainability of the RCE is being considered early, with a working group set up and a range of bids underway to ensure further funding is leveraged into the RCE in preparation for the end of the UK Gov funding period for RCE (June 2025). Preparation and discussion around service readiness and needs for asset adoption is now being progressed with H&SCM and NHS Grampian.