

## MORAY COMMUNITY PLANNING PARTNERSHIP

## Local Outcome Improvement Plan Performance Monitoring Report

Priority	Changing our relationship with alcohol		
Priority Manager	Jane Mackie Head of Community Care Health & Social Care Moray	<a href="mailto:jane.mackie@moray.gov.uk">jane.mackie@moray.gov.uk</a>	
CPP Lead Officer	Simon Boker-Ingram Chief Officer Health & Social Care Moray Integrated Joint Board	<a href="mailto:hscmchiefofficer@moray.gov.uk">hscmchiefofficer@moray.gov.uk</a>	
Report Date	16 September 2020		
Overall Status	Delivery Plan	Objectives (PI's)	People are healthier and experience fewer harms as a result of alcohol use; <i>A whole population approach to prevention and reducing related harms</i>
(RAG)	(RAG)	(RAG)	
Progress Summary (since last report)	Completion of Delivery Plan against planned - % of actions progressing to plan		76%
• Commentary on progress towards milestones and planned actions due in reporting period	In response to prevention and reducing related harms, updates are focused on three areas; 1. Increase the number of people who are at risk of alcohol or drug harms being linked to positive environments and support. 2. Reduce inequalities experienced by people who are at risk of developing problems with alcohol and drugs. 3. Education provision for Children Young People is more in line with evidence and best practice.		
• Progress towards objectives (provide indicator result to evidence where available)	1. Increase the number of people who are at risk of alcohol or drug problems being linked to positive environments and support (note that this is based on adults aged 16+)  An estimated 210 to 350 people use drugs problematically in Moray. 22% of the Moray population regularly consume alcohol at levels in excess of the Chief Medical Officers (CMO) low risk alcohol guidance.  Since 1 April 2019, 431 Alcohol Brief Interventions (ABIs) have been delivered to residents in Moray. Increasing quarterly trend in the number of people in specialist services in Moray spread evenly between the number of alcohol and drug clients. Clients waited no longer than 3 weeks for support, with the majority receiving an assessment and support plan within 72 hours.  2. Reduce inequalities experienced by people who are at risk of developing problems with alcohol and drugs		

	<p>The following actions have been progressed to tackle stigma and adoption of rights based practices as significant barriers to promoting engagement and reducing inequalities during the reporting period –</p> <p>Advocacy contract is now in place with Circle Advocacy and is already supporting people. Rights based approach training is in development within the 2020/21 MADP prospectus, Rights Based Approach Is built into the Direct Access Alcohol / Drugs tender. Participatory budgeting run over the last 4 years has focused on CHIME principles. The DWP have launched and addiction strategy focused on promotion of engagement and support, the DWP are fully engaged with local services including providing office space for outreach support and joint working with local agencies. The Bow Café (part of the Arrows Quarriers Service) supported by partners is now running, supporting those in recovery as well as those who may need a safe or community space, have limited incomes or just want to enjoy the atmosphere, making a donation for the food provided. Promoting wellbeing and support the growth of Recovery Champions is becoming increasingly established through community initiatives such as Wellbeing hub, and TSi. Rapid re-housing and Housing First models being established through Housing that will require wider partnership working to support those to maintain tenancies. Comprehensive Workforce Development Programme is well established with activities and courses scheduled up to April 2021 to support specific initiatives or emerging issues.</p> <p>3. Education provision for children and young people is more in line with evidence and best practice</p> <p>This will be taken forward in the 2020/23 Children's Service Plan.</p>
<p>• Risks and Issues</p>	<ol style="list-style-type: none"> <li>1. Gaps in data in relation to referral pathways from Police Scotland custody and community settings to services particularly indicators evidencing early identification (alcohol screening of those in custody / development of pathways for specific alcohol and drug related offences). Strategic implication of ABIs as part of bringing drinking levels in line with CMO recommendations is a need to scale up and look at delivery to a wider setting, most people will not be in contact with primary care, so work would be needed to look at other settings where delivery of ABIs could contribute to wider wellbeing.</li> <li>2. Although there has been progress against an increasing number of actions linked to reducing inequalities, at this stage it cannot be evidenced that inequalities are reducing as people with needs linked to alcohol/drugs continue to face stigma and barriers, linked to the attitudes and perceptions of those people providing many services.</li> </ol>

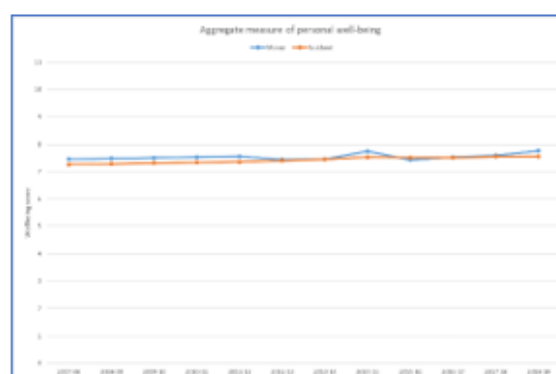
	3. Ensuring harmony and strategic alignment between Children’s Services Plan 2020/23, MADP Delivery Plan 2018/21 and the revised LOIP	
Any General Progress Commentary		
Changing the focus in the LOIP to ‘Improving wellbeing of our population’ will require substantial review, within the CPP Focus, milestones and measurements.		
Further work will be required to capture wider “whole population” measurements that cut across partnership; and how operational or thematic data can contribute to wider whole population measurements of wellbeing. The Improvement Service provide a tool ‘Community Planning Outcomes Profile’ to help assess if the lives of people in the community are improving and these measures of wellbeing are included for information below.		
Change Requests	None	
Next Steps / Targets	Comments	Due Date
	The MADP will continue to deliver against the agreed actions set out in the MADP 2018/21 Delivery Plan	
COVID-19 Recovery - impact on delivery / amendment to priority	Moray Drug and Alcohol Partnership considered at their meeting on 14 August a report on Surge Planning as a consequence of COVID-19 in respect of their contracted services. At this time, it is anticipated that any increase in demand could be managed within existing resources.	
	Impacts should be considered as part of the refocus of the LOIP priority to ‘Improving wellbeing of our population.	

## COMMUNITY PLANNING OUTCOMES PROFILE TOOL

### Wellbeing

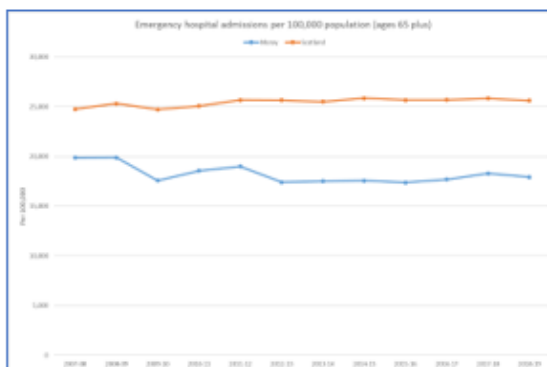
An averaged measure of wellbeing is now measured within the Annual Population Survey, which is assessed through four measures: Life Satisfaction, feeling the things done in life are worthwhile, Happiness, and Anxiety. People are asked to rate their well-being on an 11-point scale.

Nationally people's perception of their own wellbeing has gradually increased since 2007/08 from 7.3 to 7.6. Over the same period Moray has increased from 7.5 to 7.8.



### Emergency hospital admissions for 65-year-olds and older

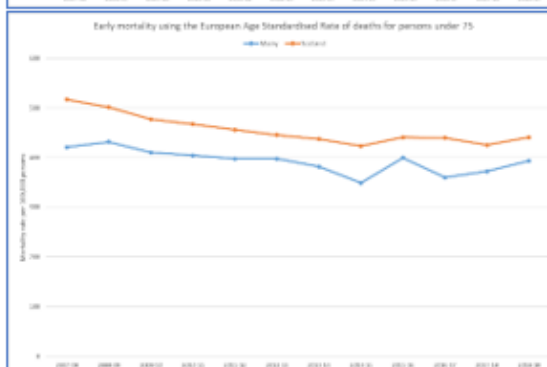
There has been a reduction in the rate of older people in Moray requiring emergency hospital admissions from around 20,000 per 100,000 population to 18,000 per 100,000 population between 2007/08 and 2018/19. Over the same period the rate across Scotland has risen to over 25,600 per 100,000 population from just under 25,000.



### Early mortality






The death rate for people under 75-year olds has gradually decreased since 2007/08, although there has been a reversal of the trend in the years since 2014/15. Nationally the improving trend was reversed in 2017/18.

Moray's rate in 2018/19 of 394 per 100,000 people was below the national rate of 441 per 100,000.





## Delivery Framework – suggested indicators

PI Status									
	Alert		Warning		OK		Unknown		Data Only

<b>Priority</b> Empowering and Connecting Communities <b>Managed By</b> Shirriffs, Jo											
Short Name	Current Target	2018/19	2019/20	2020/21	Q4 2018/19	Q1 2019/20	Q2 2019/20	Q3 2019/20	Q4 2019/20	Latest Note	Traffic Light Icon
		Value	Value	Value	Value	Value	Value	Value	Value		

### LOIP Outcome and Direction Indicators -

Rate of Domestic Abuse Crimes per 10,000 population

Alcohol related health indicators

Increase the number of alcohol brief interventions (ABIs) delivered in accordance with the HEAT Standard guidance

Proportion of Service Users who wait less than three weeks from referral to commencement of treatment to be maintained at 98% or above.

Proportion of Service Users receiving a review at 3, 6 and 12 months.

Use the 2018/20 Recovery Outcomes data from July 2017, based on the 10 recovery domains to inform 2018/19 and future targets

2020/21 workforce development prospectus

% of adults drinking above guidance limits

